

# ***Long Lake Public School RDSB Meeting Oct 18, 2010***



October 18, 2010

Presentation by John Hamalainen

1

# Introduction

---

- My name is John Hamalainen. I'm here tonight to share some of my thoughts on Long Lake Public School.
- Presently I have two children attending the school, one in grade 6 and one in junior kindergarten.

# Topics Covered

---

- Value to Student Summary
- The Numbers
- Carbon Footprint
- Ontario's Deficit
- The Water System
- Grade 6 Student Comments
- Public Input
- Option 5
- Photograph's
- Conclusion

## **Value to the Student Summary**

---

- Children take pleasure in attending LLPS
- Are being taught by committed exceptional teachers
- Have a park like setting surrounded by unique outdoor learning areas, playing fields, grass, flower/ vegetable gardens and mature trees. Long Lake is truly a “Green School”

## **Value to Student Summary**

---

- Value to student is the #1 guiding principle of ARC.
- LLPS students have a unique learning experience.
- This uniqueness should be preserved for present and future students to benefit from.

## **Value to Student Summary**

---

- Some educators feel shiny, new, high tech is what's best for our children.
- That's simply not true. More important is the one of a kind learning experience they get at LLPS.
- Students shouldn't be told what they need, they should be telling us and we should be listening

## **Value to Student Summary**

---

- LLPS does not have a full size gymnasium, so what?
- We have a huge outdoor gymnasium, full of fresh air, physical activity, sports and scenery.
- Despite the smaller size gym, this is not a hindrance, in fact it furthers the outdoor program.

## **Value to Student Summary**

---

- It would not be right to take these children from this green space and place them in an environment that is so much different from what they are used to
- They would miss the mature trees, green grass, outdoor learning circle, wildlife, view of the lake, nature trails, skiing and snow shoeing.



## **Value to Student Summary**

- Students walking or biking to school would no longer be able to do so, instead they'd be on a bus, is that value to the student?
- The additional bus time of up to an hour for some students would take time away from their leisure time, again is that value to the student?

## **Value to Student Summary**

---

- If value to the student is truly the guiding principle, then the school should remain open and continue to provide this unique learning experience.
- This unique learning experience should also be marketed to the community

## The Numbers

---

- I won't repeat too much of what I said in June about the numbers.
- In 2003, the Long Lake capital repair numbers provided by the Ministry of Education were about \$400,000.

## The Numbers

---

- Since then, the number has ballooned to \$1.8 Million, how can that be?
- The answer is it can't.
- Long Lake does not require anything near \$1.8 Million worth of repairs.
- The \$1.8 Million is “if I won the lottery number”.

## The Numbers

---

- The one number that amazes all of us is land improvements, \$500,000
  - Site Improvements - \$207,000
  - Sports Field & Recreational Spaces \$171,000
  - Soft Landscaping \$45,000
- The Long Lake site is in good to excellent condition so why in the world would you spend \$500,000.

## The Numbers

---

- Ventilation System: \$176,000
- What's wrong with opening the windows, teachers prefer this versus having a computer controlling the fresh air.
- The capital repair numbers are not accurate and should not be used to make important decisions like closing a school

# Carbon Footprint

---

- RDSB has stated it wants to be as carbon neutral/friendly as possible
- However new construction produces tonnes of carbon embodied in the construction materials
- A school bus produces about 2.7 Kg of greenhouse gas for every litre of fuel.

## Carbon Footprint

---

- School buses on average consume 35 litres of diesel per 100 km
- From LLPS to Algonquin return is about 10 km using about 3.5 litres of fuel
- Therefore for one school bus, an additional 9.45 kg ( $2.7 \times 3.5$ ) of greenhouse gas is emitted each day x 196 days = 1,852 kg each year



## Ontario's Deficit

---

- Ontario's accumulated deficit is about \$138 billion.
- 2009 - 2010 deficit was about \$25 billion
- Ontario will continue to have a deficit for another 8 years
- Our children will be have to help repay this debt

## Ontario's Deficit

---

- Should we be borrowing money to build new schools if the existing school serves the students well?
- LLPS has long been paid for, is debt free and can continue to function without a large investment
- Should we not be teaching students by example the importance of living within our financial means?

## The Water System

---

- Ontario has a Safe Drinking Water Act
- Long Lake PS and many other were required to upgrade the water system in 2002 to comply with the act.
- The system is a high end one judged by industry standards. \$188,000 invested.
- Occasionally the system needs to be fine tuned to bring it into compliance.

# The Water System

---

- This situation happens with many schools not just Long Lake including those connected to municipal systems
- Drinking water in Ontario has become a major concern since Walkerton
- This is something we will all just have to accept in order to ensure safe drinking water for everyone

# The Water System

---

- LLPS water system is safe



## **Grade 6 Student Comments**

---

- I asked my daughter Kaitlyn what she liked best about the school
- There has not been one bullying incident in all the time she has attended, everyone gets along
- The teachers and staff are friendly and nice

## **Grade 6 Student Comments**

---

- She knows the first name of all 69 students and many second names
- The outdoor play area and outdoor activities are enjoyable

## Public Input

---

- When the ARC process began in January, the public were told and encouraged to provide input.
- Long Lake responded with 10 first rate presentations plus 4 tonight.
- It was everyone's understanding this input would be used in the decision making process.



## Public Input

---

- The parents and students demonstrated value to the student and how to deal with surplus space
- Based on the Administrative Council's recommendation, it would appear very little of the public input was considered.
- Why wasn't this input considered a lot more by the Admin Council and ARC?

## Public Input

---

- I personally attended 5 ARC meetings and observed the following.
- The large group made it difficult to carryout meaningful discussions amongst all 40 members.
- The group seemed to be dominated by about 6-7 leaders and many followers

## Public Input

---

- A lot of important decisions were being made by a small group who were likely influencing others
- Near the end of the ARC process, attendance was down significantly and frustration amongst some members quite apparent
- Improvements to ARC are needed if the public is to support this

## Option 5

---

- If the school closes there is another option for parents and students
- With the uniqueness and charm of a small school like Long Lake gone, RDSB will no longer have the drawing card that attracted many students to LLPS
- Parents will likely look at all of the their options when choosing a new school

## Option 5

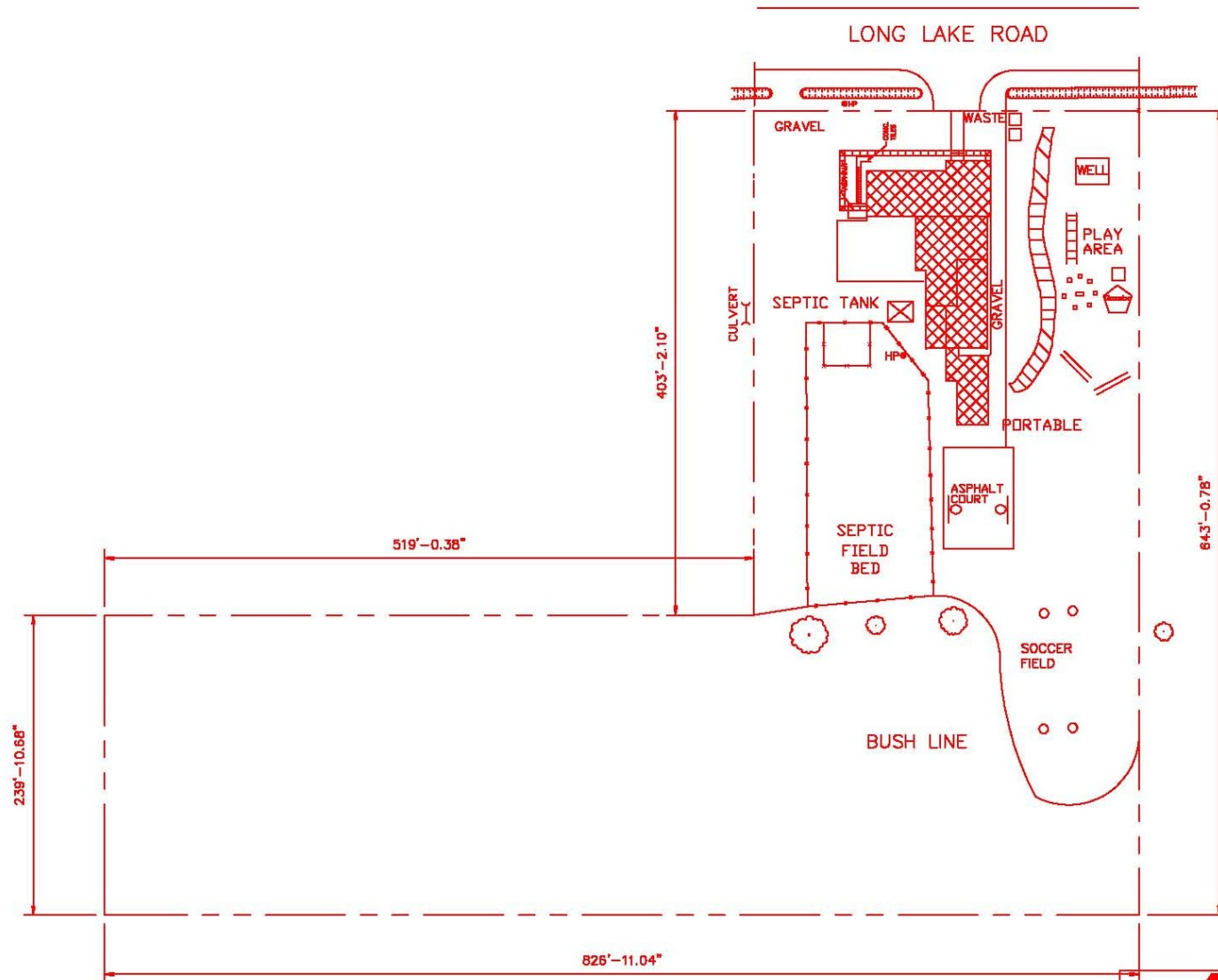
---

- Hopefully this option will not materialize



# Photographs

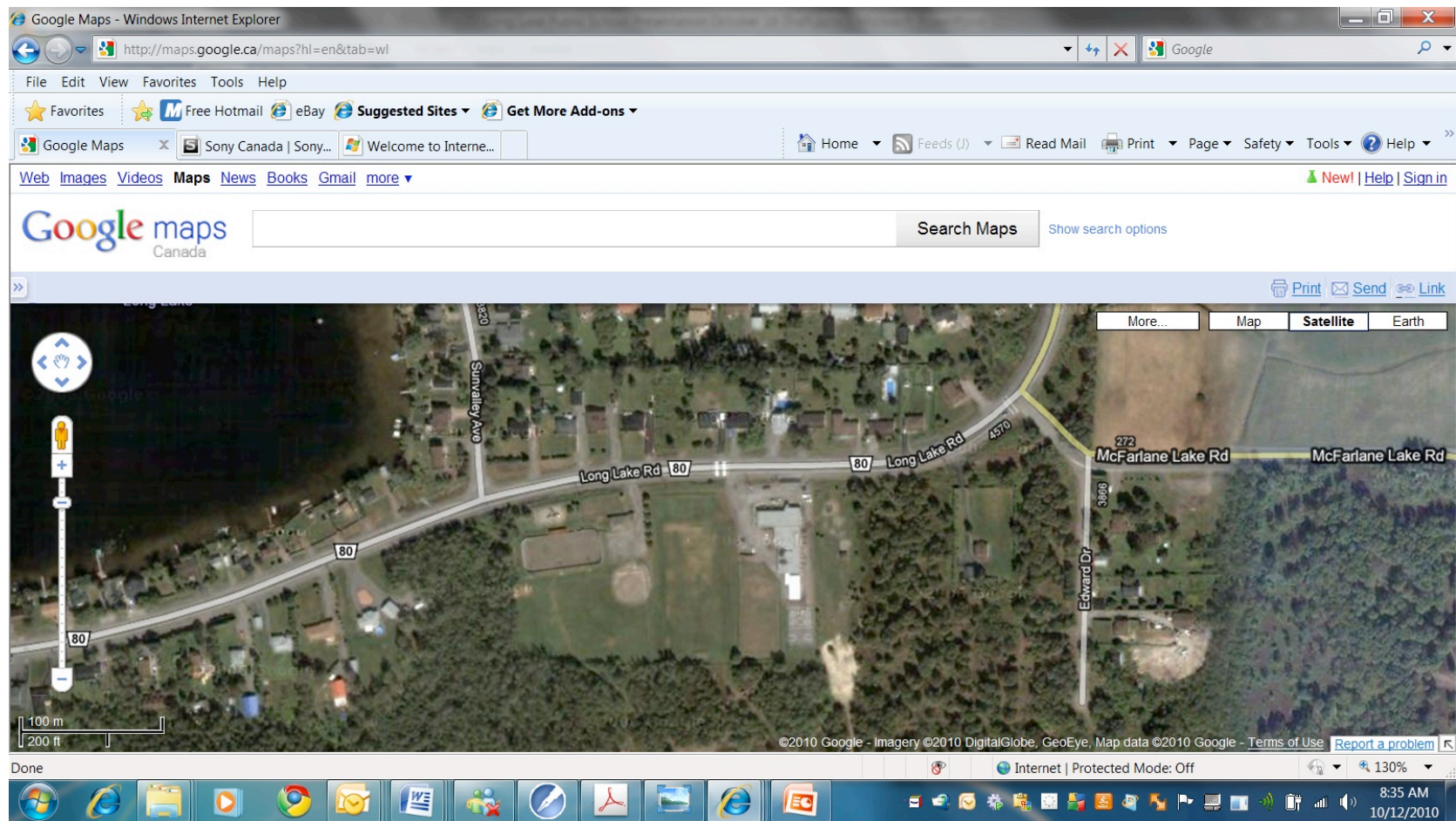
---



**LONG LAKE P.S.**  
Sudbury, Ontario

Scale	Drawn by	J.P.S.	Date
-	Chd. By	A.D.S.	JAN/2010
Eng. No. <b>102-Physical</b>			Rev. 1





October 18, 2010

Presentation by John Hamalainen

32





October 18, 2010

Presentation by John Hamalainen

33





October 18, 2010

Presentation by John Hamalainen

34





October 18, 2010

Presentation by John Hamalainen

35





October 18, 2010

Presentation by John Hamalainen

36





October 18, 2010

Presentation by John Hamalainen

37





October 18, 2010

Presentation by John Hamalainen

38





October 18, 2010

Presentation by John Hamalainen

39





October 18, 2010

Presentation by John Hamalainen

40





October 18, 2010

Presentation by John Hamalainen

41

## Conclusion

---

- Long Lake Public School is unique, viable and sustainable.
- Value to the student and controlling surplus space have been clearly demonstrated
- The two guiding principles of ARC have been met so the school should remain open.
- Thank you