



# City of Greater Sudbury

---

An overview of demographics &  
development in the City of Greater  
Sudbury

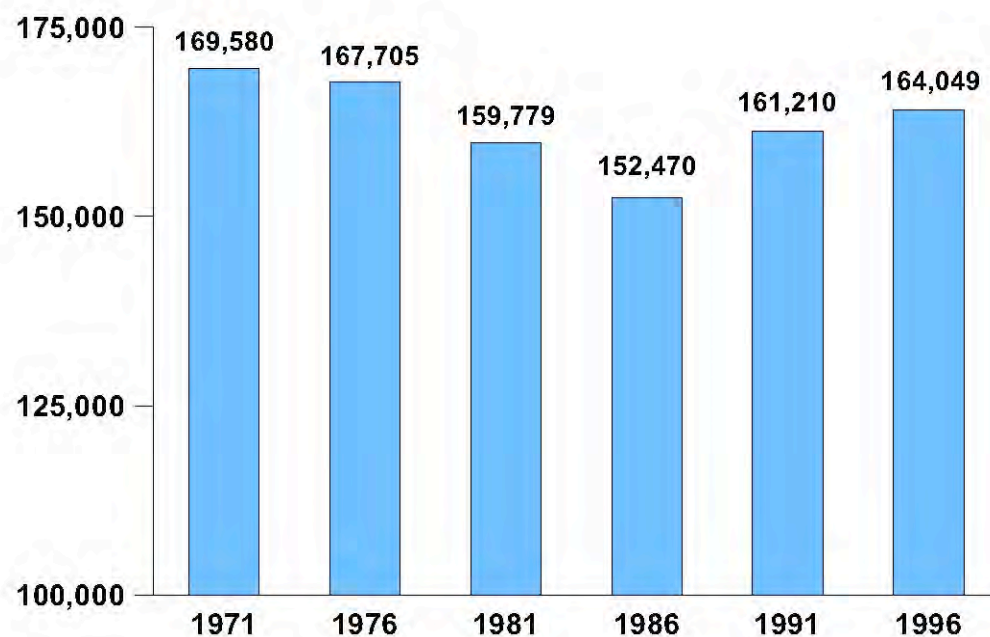
March 23<sup>rd</sup>, 2010

## Keyfacts Population

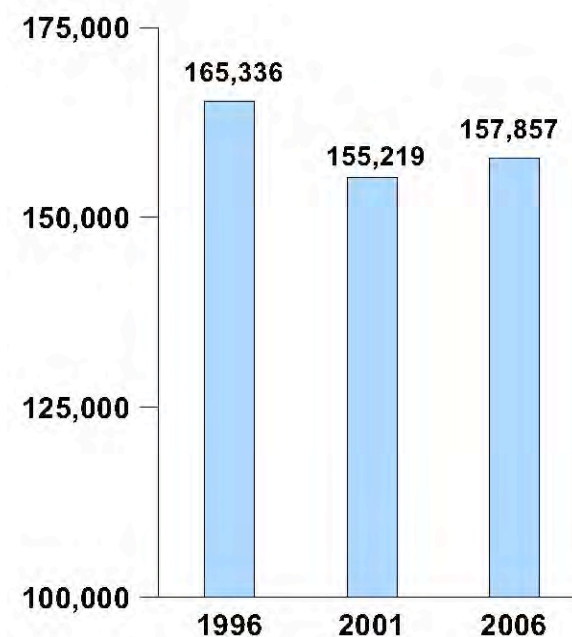
PO Box 5000, STN A  
200 Brady Street  
Sudbury, ON P3A 5P3  
(705) 671-2489



### Total Population 1971 - 2006



Regional Municipality of Sudbury



City of Greater Sudbury

Source: Statistics Canada; 1971, 1976, 1981, 1986, 1991, 1996, 2001, 2006 Census of Canada.

# 2006 Census: Population Change

## City of Greater Sudbury

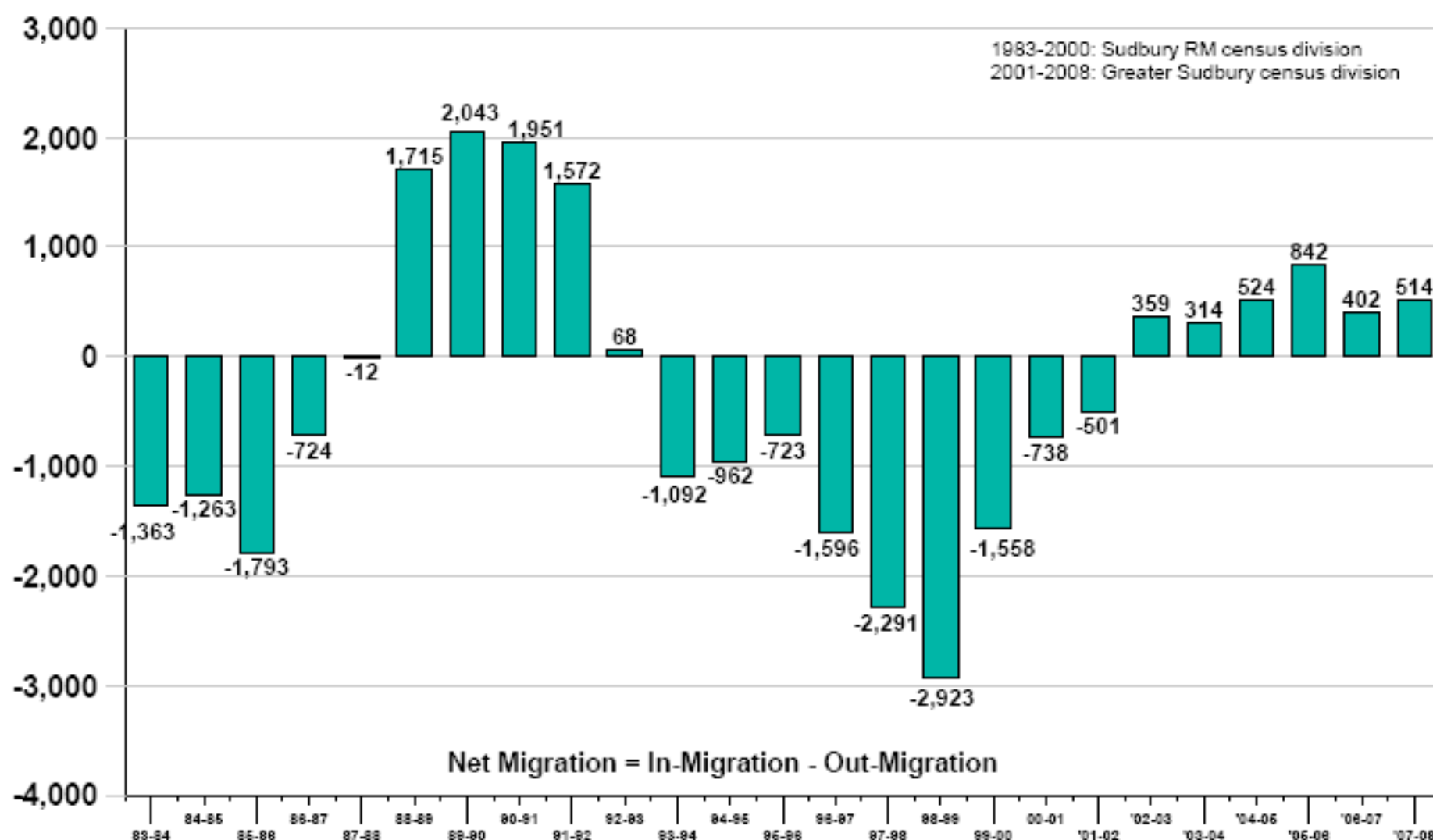
Area	2001	2006	% change
Capreol	3,486	3,492	0.2%
Nickel Centre	12,672	12,629	-0.3%
Onaping Falls	4,887	4,742	-3.0%
Rayside Balfour	15,046	14,359	-4.6%
Sudbury	85,354	88,855	4.1%
Valley East	22,374	22,664	1.3%
Walden	10,101	10,158	0.6%
former Regional Municipality	153,920	156,899	1.9%
New Townships	1,299	958	-26.3%
City of Greater Sudbury	155,219	157,857	1.7%

# Keyfacts Population



PO Box 5000, STN A  
200 Brady Street  
Sudbury, ON P3A 5P3  
(705) 671-2489

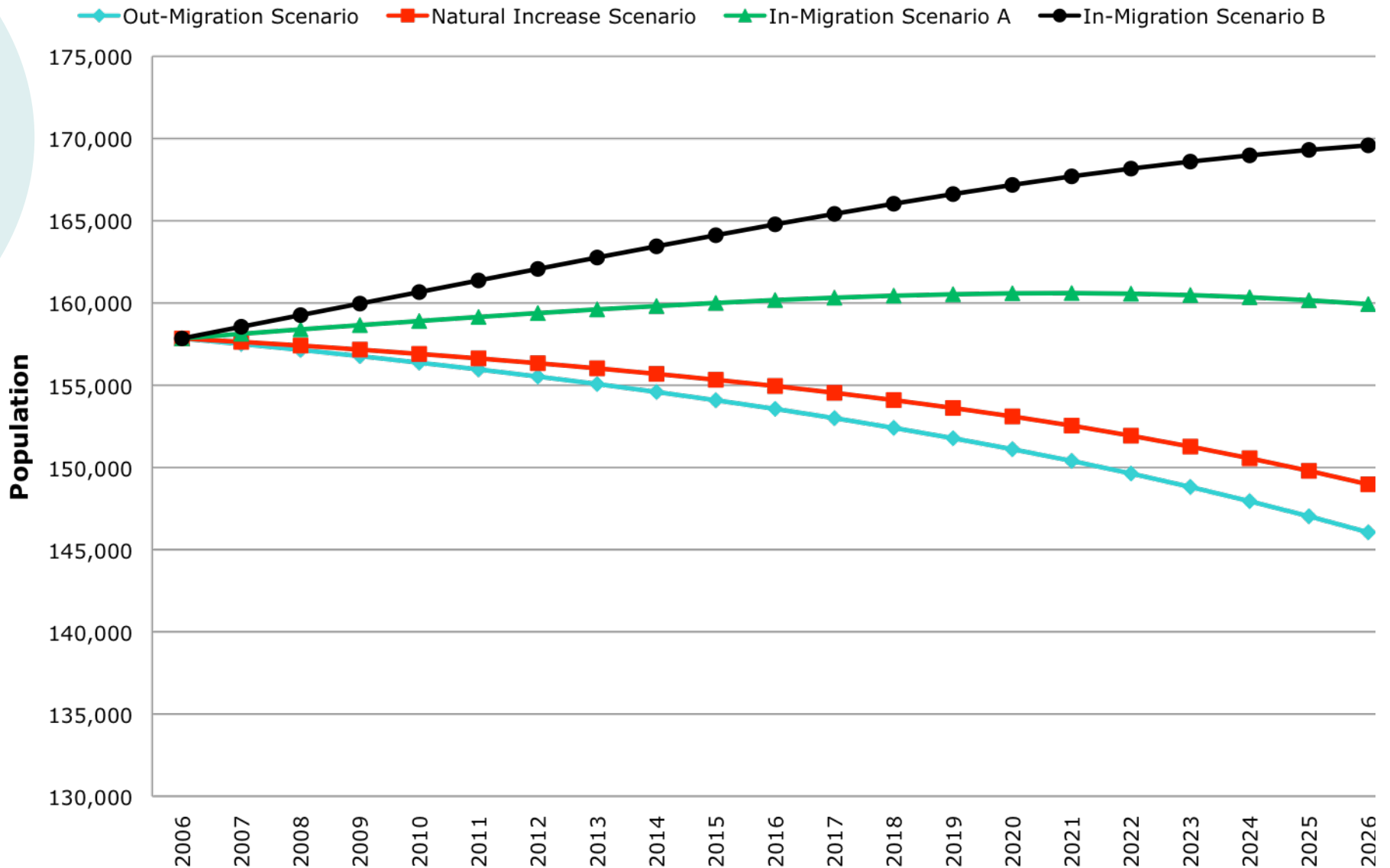
## Net Migration 1983 - 2008



Source: Statistics Canada; *Migration Estimates*, Cat. # 91C0025; migration estimates based on taxation records.  
The period of reference extends from April of one year to April of the following year.

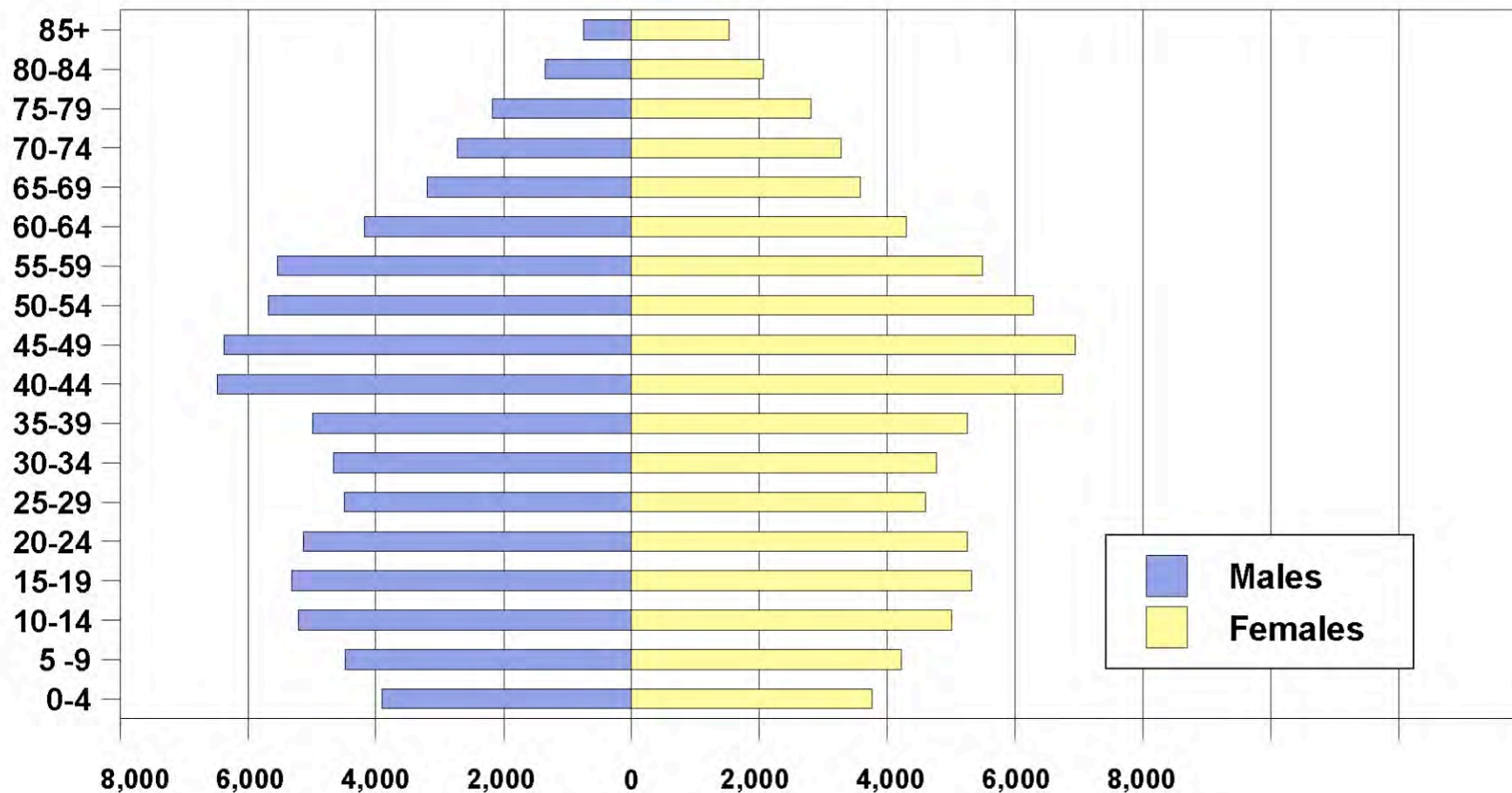
# Population Projections (2006-2026)

## City of Greater Sudbury





## City of Greater Sudbury: 2006 Population Pyramid



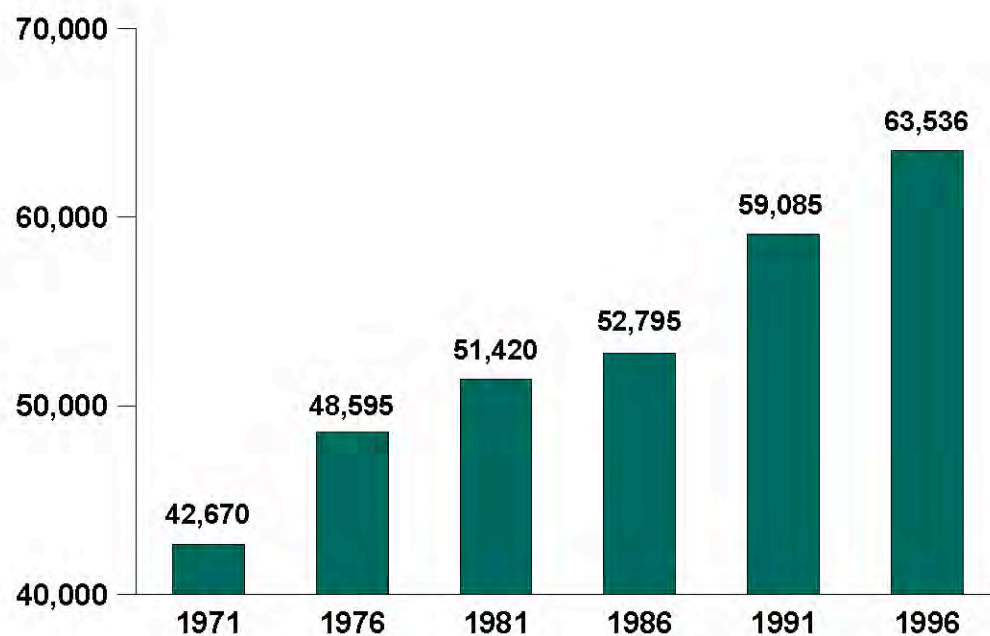
Source: Statistics Canada, 2006 Census of Canada.

## Keyfacts Population

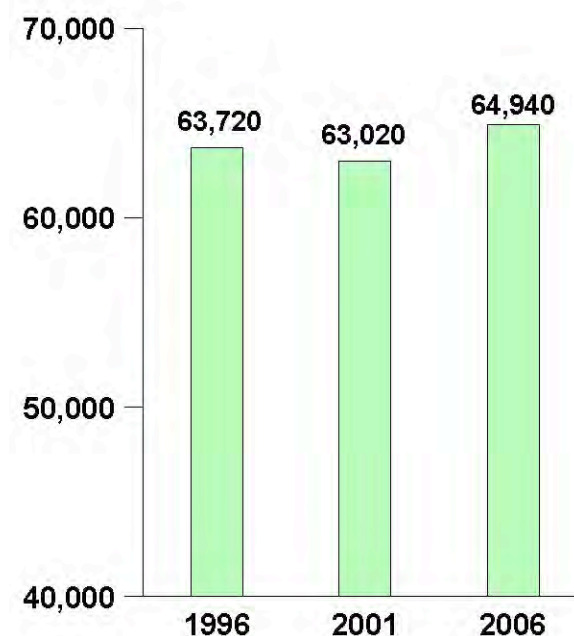
PO Box 5000, STN A  
200 Brady Street  
Sudbury, ON P3A 5P3  
(705) 671-2489



### Total Households 1971 - 2006



Regional Municipality of Sudbury



City of Greater Sudbury

Source: Statistics Canada; 1971, 1976, 1981, 1986, 1991, 1996, 2001, 2006 Census of Canada.

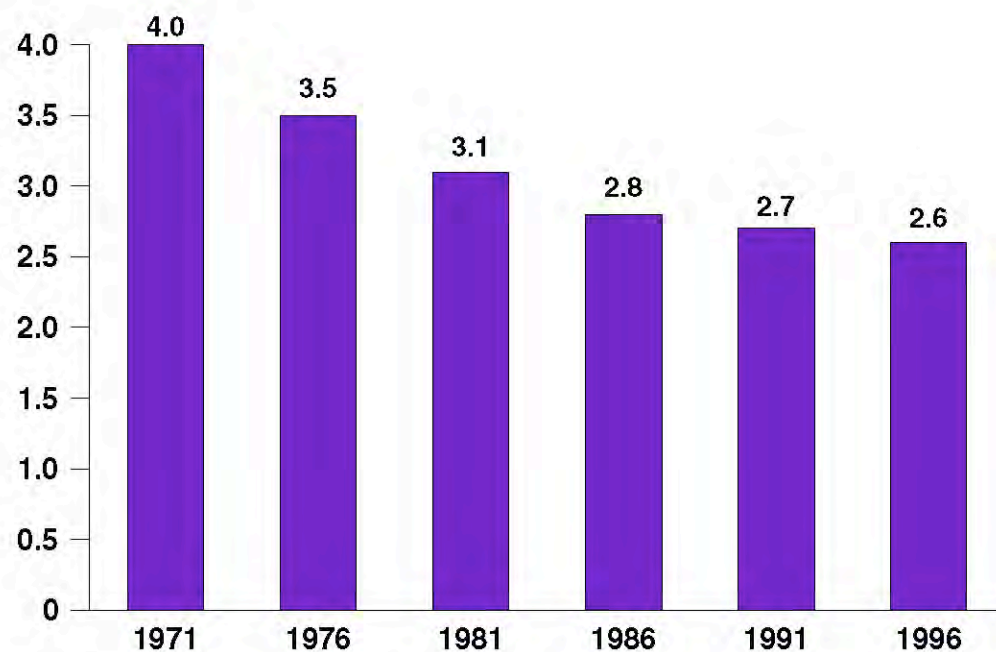


## Keyfacts Population

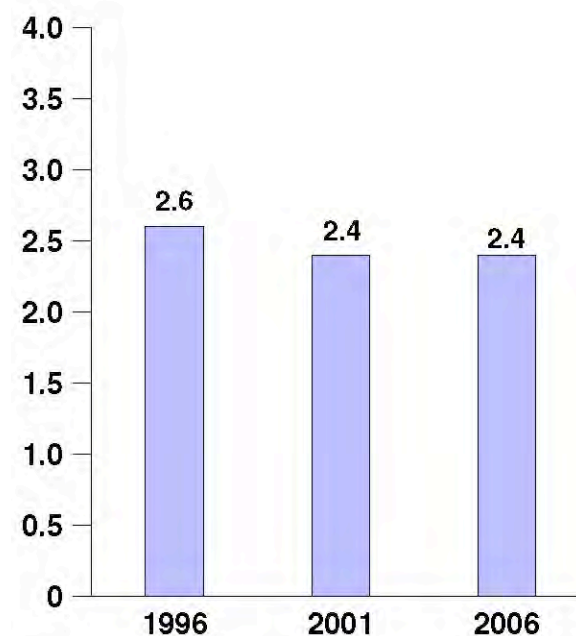
PO Box 5000, STN A  
200 Brady Street  
Sudbury, ON P3A 5P3  
(705) 671-2489



### Average Household Size 1971 - 2006



Regional Municipality of Sudbury



City of Greater Sudbury

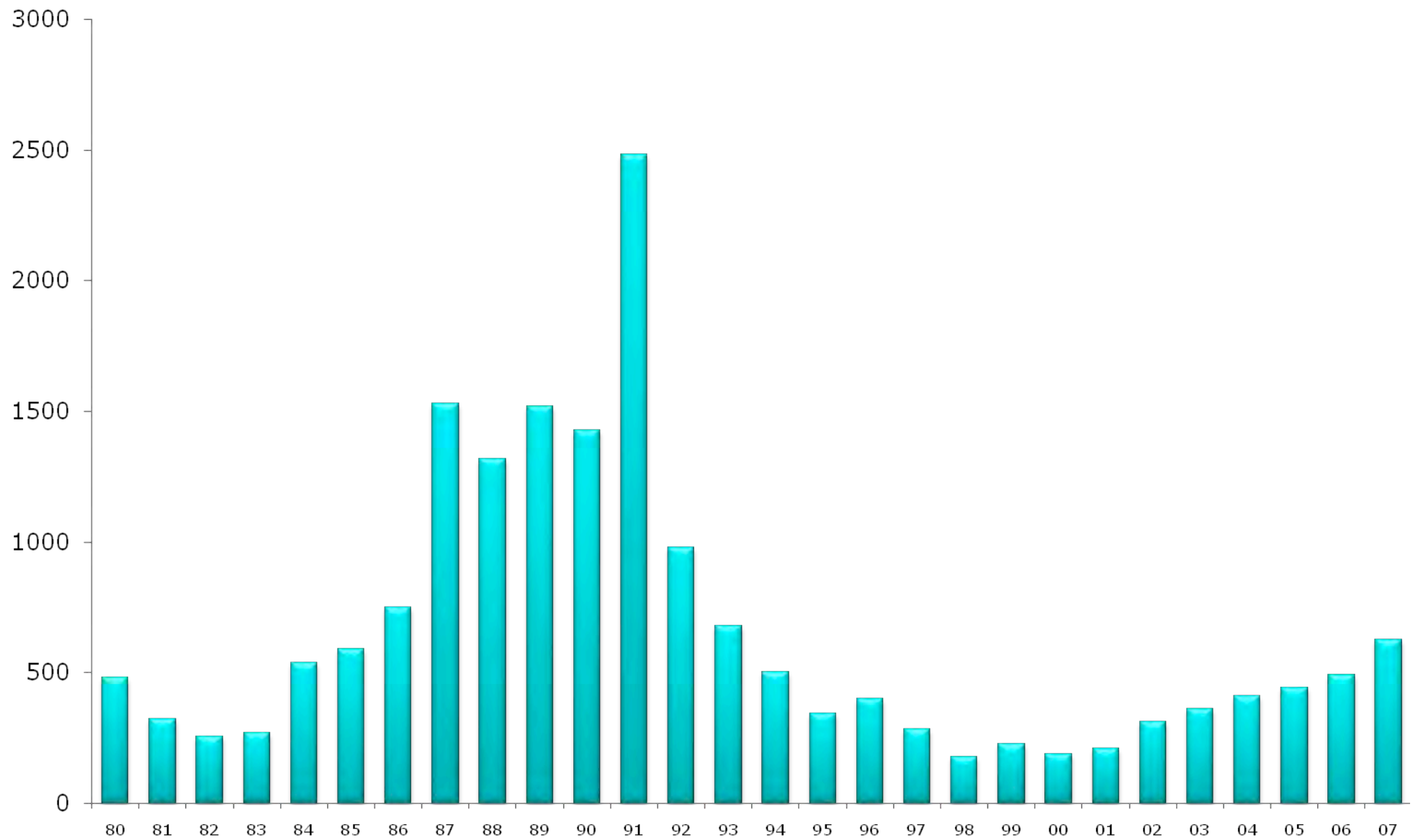
Source: Statistics Canada; 1971, 1976, 1981, 1986, 1991, 1996, 2001, 2006 Census of Canada.



# 2010 Building Permit Tracking Report

Total Number of Residential Units  
Created 1980-2009

Total number of  
residential units



## New Residential Units by Type & Area 1997-2009

[illegible]

Number of new units  
created in 2009 in the  
City of Greater Sudbury  
by Area

Area	Number of Units		% of CGS total	
<b>Sudbury</b>	460		49.9%	
South End	175		19.0	
New Sudbury	20		2.2	
Minnow Lake	109		11.8	
Old City	140		15.2	
rural areas	16		1.7	
<b>Capreol</b>	23		2.5%	
Town	22		2.4	
rural	1		0.1	
<b>Nickel Centre</b>	70		7.6%	
Garson	54		5.9	
Coniston	3		0.3	
Skead	1		0.1	
Falconbridge	0		0.0	
Wahnapitae	1		0.1	
rural	11		1.2	
<b>Onaping Falls</b>	4		0.4%	
Dowling	0		0.0	
Onaping	1		0.1	
Levack	0		0.0	
rural	3		0.3	
<b>Rayside-Balfour</b>	149		16.2%	
Chelmsford	29		3.1	
Azilda	103		11.2	
rural	17		1.8	
<b>Valley East</b>	169		18.3%	
Val Caron	29		3.1	
Val Therese	90		9.8	
Hanmer	26		2.8	
rural	24		2.6	
<b>Walden</b>	43		4.7%	
Old Lively	23		2.5	
Mikkola	7		0.8	
Naughton	1		0.1	
Whitefish	0		0.0	
rural	12		1.3	
<b>New townships</b>	3		0.3%	
Northeast	0		0.0	
Southeast	3		0.3	
<b>total:</b>	<b>921</b>	<b>921</b>	<b>100.0%</b>	<b>100.</b>

# New Residential Units created in Sudbury neighbourhoods (1997-2009)

	1997	1998	1999	2000	2001	2002	2003	2004	2005	2006	2007	2008	2009	Total	% total
<b>South End</b>	45	32	39	34	58	79	75	100	86	89	103	93	175	<b>1,008</b>	<b>46.9</b>
<b>New Sudbury</b>	23	9	8	37	37	57	47	35	28	22	23	17	20	<b>363</b>	<b>16.9</b>
<b>Minnow Lake</b>	30	5	4	2	3	11	14	19	25	44	46	55	109	<b>367</b>	<b>17.9</b>
<b>Old City</b>	1	2	2	10	6	0	2	5	8	13	40	23	140	<b>252</b>	<b>11.7</b>
<b>Rural areas</b>	9	8	8	-	-	12	18	16	19	17	14	22	16	<b>159</b>	<b>7.4</b>
<b>TOTAL</b>	<b>108</b>	<b>56</b>	<b>61</b>	<b>83</b>	<b>104</b>	<b>159</b>	<b>156</b>	<b>175</b>	<b>166</b>	<b>185</b>	<b>226</b>	<b>210</b>	<b>460</b>	<b>2,149</b>	<b>100.0</b>

Source: City of Greater Sudbury Building Permit Verification Reports (1997-present), Building Services Section  
Prepared by the Community & Strategic Planning Section

# Population Trend 1996-2006 (Ages 0-14)

## For the South End of Sudbury

South End – youth population				
	1991*	1996*	2001**	2006**
Age Group				
0-4	1,160	1,020	855	910
5-9	1,110	1,190	1,080	1,020
10-14	1,240	1,285	1,235	1,330
Total 0-14	<b>3,510</b> (13.3 % of CGS)	<b>3,495</b> (11 % of CGS)	<b>3,170</b> (11.2 % of CGS)	<b>3,260</b> (12.3 % of CGS)

Note:

\*South End 1991, 1996: Census Tracts 1.01, 1.02, 1.03, 1.04

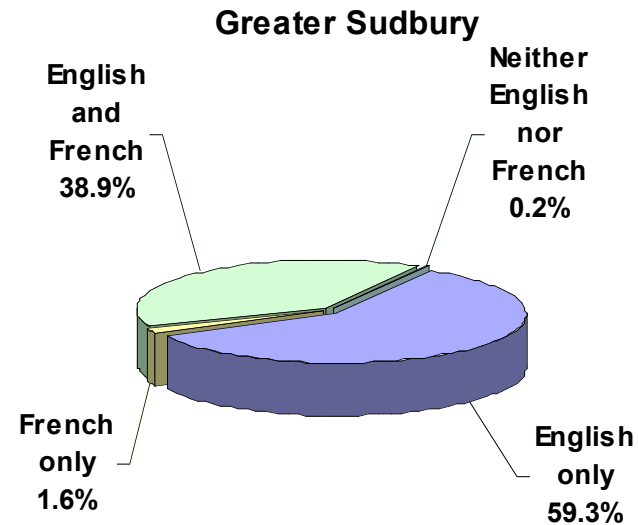
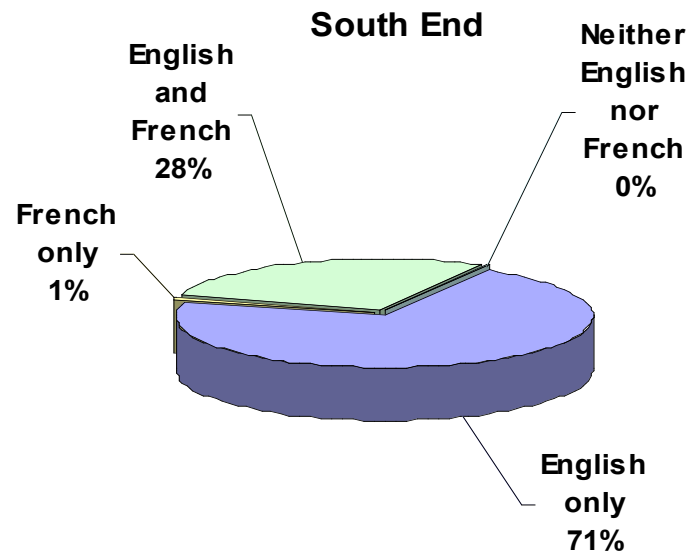
\*\*South End 2001, 2006: Census Tracts 001.01, 001.02, 001.05, 001.06 and 001.03 excluding DAs 35530372 & 35530373

# Bilingualism

## 2006 Census: Bilingualism

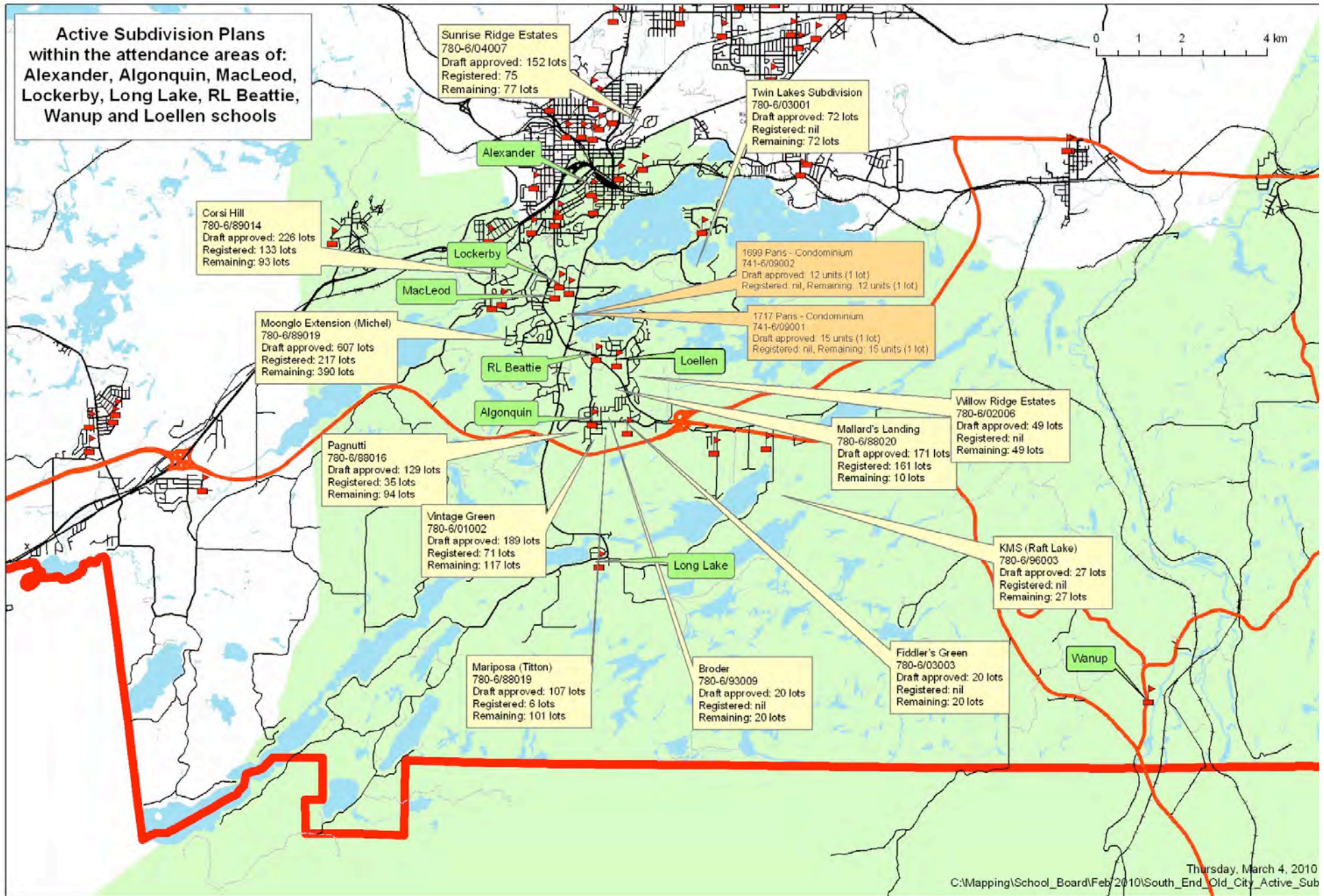
Total population by knowledge of official languages - 20% Sample Data

	South End	% of total	Greater Sudbury	% of total
Total population by knowledge of official languages - 20% Sample Data	20,975	-	155,995	-
English only	14,880	70.9%	92,480	59.3%
French only	160	0.8%	2,550	1.6%
<b>English and French</b>	<b>5,830</b>	<b>27.8%</b>	<b>60,680</b>	<b>38.9%</b>
Neither English nor French	80	0.4%	285	0.2%





**Active Subdivision Plans  
within the attendance areas of:  
Alexander, Algonquin, MacLeod,  
Lockerby, Long Lake, RL Beattie,  
Wanup and Loellen schools**





**Alexander Public**  
**2006 Census**  
**Population: 14,288**  
**Households: 6,925**

0 0.25 0.5 1 km

**Alexander Public School**

Sunrise Ridge Estates  
780-6/04007  
Draft approved: 152 lots  
Registered: 74  
Remaining: 77 lots

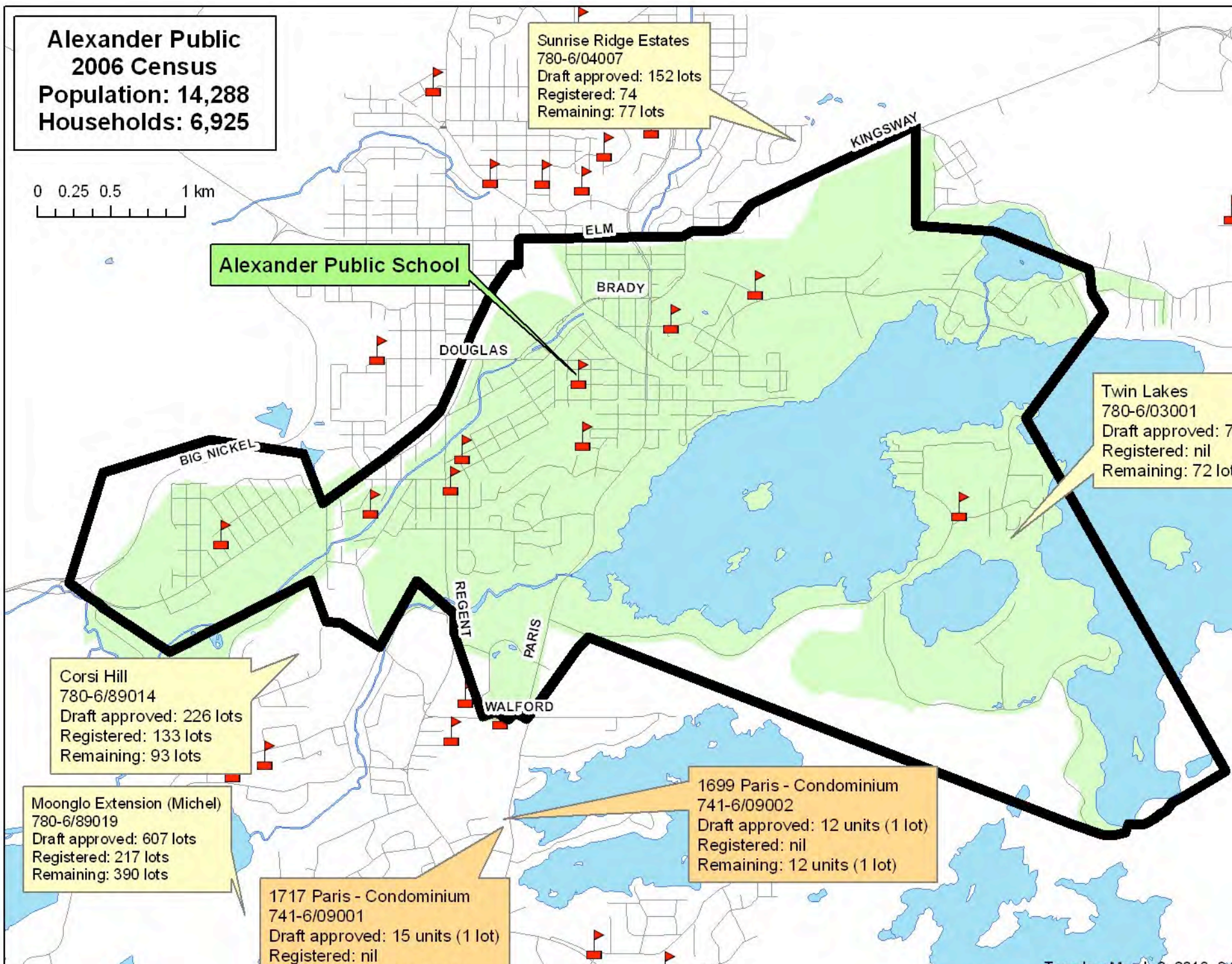
Twin Lakes  
780-6/03001  
Draft approved: 72 lots  
Registered: nil  
Remaining: 72 lots

Corsi Hill  
780-6/89014  
Draft approved: 226 lots  
Registered: 133 lots  
Remaining: 93 lots

Moonglo Extension (Michel)  
780-6/89019  
Draft approved: 607 lots  
Registered: 217 lots  
Remaining: 390 lots

1717 Paris - Condominium  
741-6/09001  
Draft approved: 15 units (1 lot)  
Registered: nil

1699 Paris - Condominium  
741-6/09002  
Draft approved: 12 units (1 lot)  
Registered: nil  
Remaining: 12 units (1 lot)





**Algonquin Public**  
**2006 Census**  
**Population: 4,717**  
**Households: 1,700**

Moonglo Extension (Michel)  
780-6/89019  
Draft approved: 607 lots  
Registered: 217 lots  
Remaining: 390 lots

1699 Paris - Condominium  
741-6/09002  
Draft approved: 12 units (1 lot)  
Registered: nil, Remaining: 12 units (1 lot)

1717 Paris - Condominium  
741-6/09001  
Draft approved: 15 units (1 lot)  
Registered: nil  
Remaining: 15 units (1 lot)

Willow Ridge Estates  
780-6/02006  
Draft approved: 49 lots  
Registered: nil  
Remaining: 49 lots

Mallard's Landing  
780-6/88020  
Draft approved: 171 lots  
Registered: 161 lots  
Remaining: 10 lots

**Algonquin Public**

Pagnutti  
780-6/88016  
Draft approved: 129 lots  
Registered: 35 lots  
Remaining: 94 lots

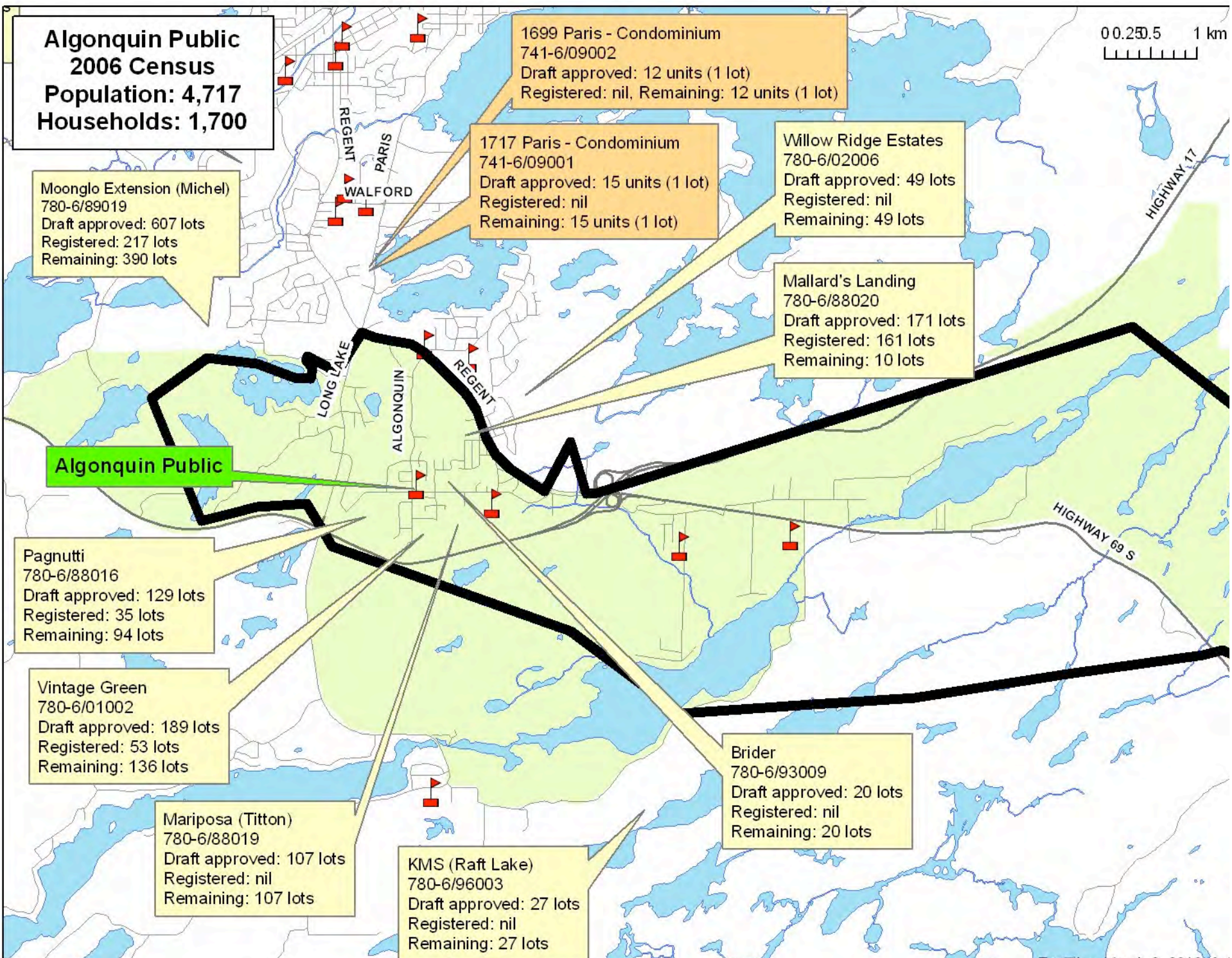
Vintage Green  
780-6/01002  
Draft approved: 189 lots  
Registered: 53 lots  
Remaining: 136 lots

Mariposa (Titton)  
780-6/88019  
Draft approved: 107 lots  
Registered: nil  
Remaining: 107 lots

KMS (Raft Lake)  
780-6/96003  
Draft approved: 27 lots  
Registered: nil  
Remaining: 27 lots

Brider  
780-6/93009  
Draft approved: 20 lots  
Registered: nil  
Remaining: 20 lots

0 0.25 0.5 1 km





**MacLeod Public**  
**2006 Census**  
**Population: 12,742**  
**Households: 5,725**

0 0.25 0.5 1 km

Twin Lakes  
780-6/03001  
Draft approved: 72 lots  
Registered: nil  
Remaining: 72 lots

Greenwood Drive - Dalron  
780-6/04004  
Draft approved: 52 lots  
Registered: nil  
Remaining: 52 lots

Greenwood Drive -  
780-6/07002  
Draft approved: 52  
Registered: nil  
Remaining: 52 lots

Corsi Hill  
780-6/89014  
Draft approved: 226 lots  
Registered: 133 lots  
Remaining: 93 lots

**MacLeod Public School**

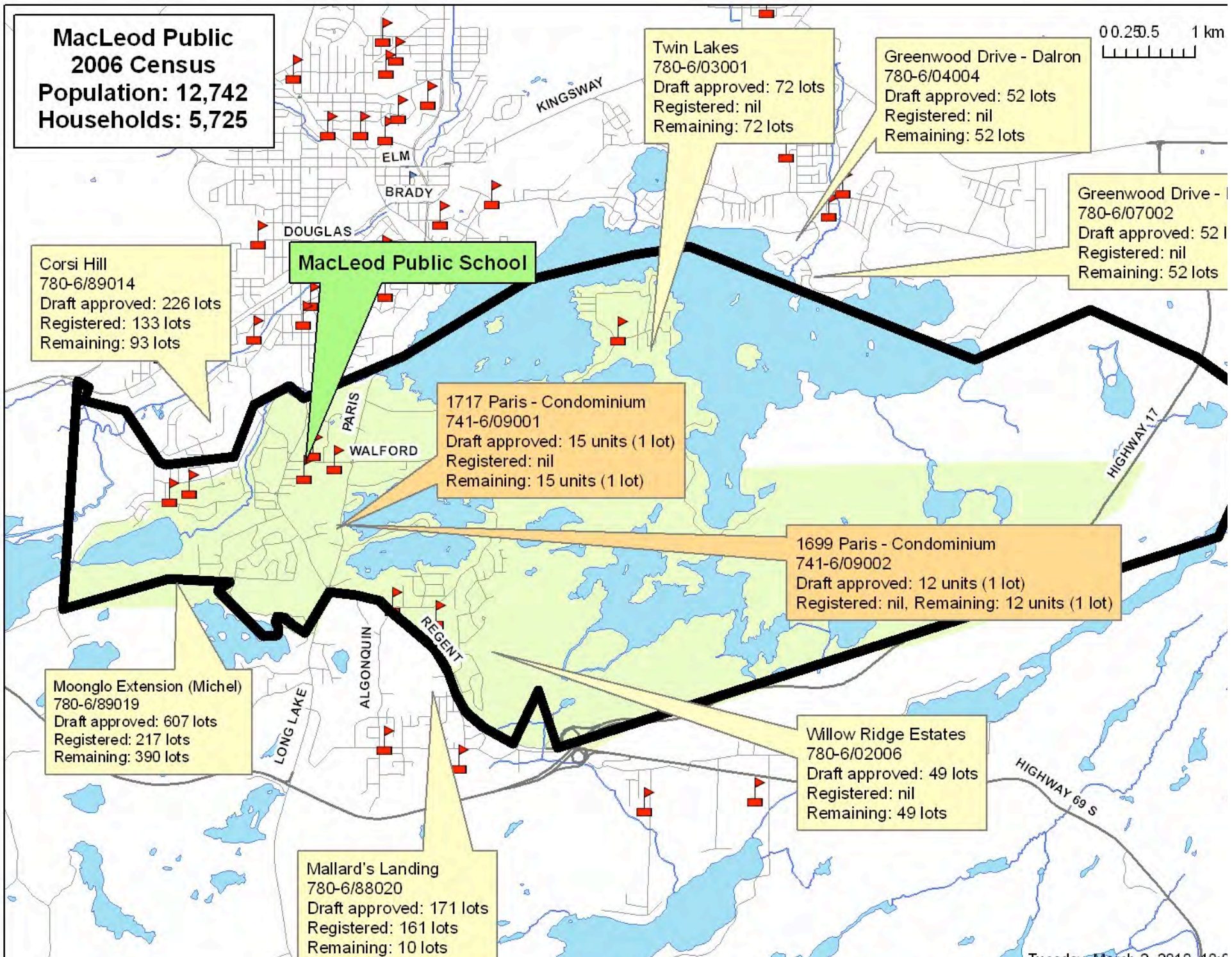
1717 Paris - Condominium  
741-6/09001  
Draft approved: 15 units (1 lot)  
Registered: nil  
Remaining: 15 units (1 lot)

1699 Paris - Condominium  
741-6/09002  
Draft approved: 12 units (1 lot)  
Registered: nil, Remaining: 12 units (1 lot)

Moonglo Extension (Michel)  
780-6/89019  
Draft approved: 607 lots  
Registered: 217 lots  
Remaining: 390 lots

Willow Ridge Estates  
780-6/02006  
Draft approved: 49 lots  
Registered: nil  
Remaining: 49 lots

Mallard's Landing  
780-6/88020  
Draft approved: 171 lots  
Registered: 161 lots  
Remaining: 10 lots





**Lockerby Composite**  
**2006 Census**  
**Population: 21,384**  
**Households: 9,525**

0 0.25 0.5 1 km

**Lockerby Composite School**

**Twin Lakes**  
780-6/03001  
Draft approved: 72 lots  
Registered: nil  
Remaining: 72 lots

**1717 Paris - Condominium**  
741-6/09001  
Draft approved: 15 units (1 lot)  
Registered: nil  
Remaining: 15 units (1 lot)

**Corsi Hill**  
780-6/89014  
Draft approved: 226 lots  
Registered: 133 lots  
Remaining: 93 lots

**Moonglo Extension (Michel)**  
780-6/89019  
Draft approved: 607 lots  
Registered: 217 lots  
Remaining: 390 lots

**1699 Paris - Condominium**  
741-6/09002  
Draft approved: 12 units (1 lot)  
Registered: nil, Remaining: 12 units (1 lot)

BIG NICKEL

DOUGLAS

BRADY

ELM

KINGSWAY

PARIS

WALFORD

ALGONQUIN

REGENT

LONG LAKE

Tuesday, March 2, 2010 10:14 AM



**Long Lake Public  
2006 Census  
Population: 4,139  
Households: 1,590**

Corsi Hill  
780-6/89014  
Draft approved: 226 lots  
Registered: 133 lots  
Remaining: 93 lots

Moonglo Extension (Michel)  
780-6/89019  
Draft approved: 607 lots  
Registered: 217 lots  
Remaining: 390 lots

1699 Paris - Condominium  
741-6/09002  
Draft approved: 12 units (1 lot)  
Registered: nil, Remaining: 12 units (1 lot)

1717 Paris - Condominium  
741-6/09001  
Draft approved: 15 units (1 lot)  
Registered: nil, Remaining: 15 units (1 lot)

Willow Ridge Estates  
780-6/02006  
Draft approved: 49 lots  
Registered: nil  
Remaining: 49 lots

Mallard's Landing  
780-6/88020  
Draft approved: 171 lots  
Registered: 161 lots  
Remaining: 10 lots

Brider  
780-6/93009  
Draft approved: 20 lots  
Registered: nil  
Remaining: 20 lots

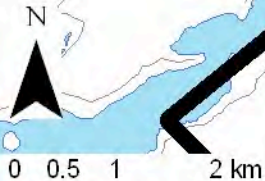
Mariposa (Tilton)  
780-6/88019  
Draft approved: 107 lots  
Registered: nil  
Remaining: 107 lots

Vintage Green  
780-6/01002  
Draft approved: 189 lots  
Registered: 53 lots  
Remaining: 136 lots

Pagnutti  
780-6/88016  
Draft approved: 129 lots  
Registered: 35 lots  
Remaining: 94 lots

KMS (Raft Lake)  
780-6/96003  
Draft approved: 27 lots  
Registered: nil  
Remaining: 27 lots

Long Lake  
Public School





**RL Beattie**  
**2006 Census**  
**Population: 21,583**  
**Households: 8,880**

Sunrise Ridge Estates  
780-6/04007  
Draft approved: 152 lots  
Registered: 74  
Remaining: 77 lots

Twin Lakes  
780-6/03001  
Draft approved: 72 lots  
Registered: nil  
Remaining: 72 lots

Keystone  
780-6/06006  
Draft approved: 110 lots  
Registered: nil  
Remaining: 110 lots

Greenwood Drive - Dalron  
780-6/04004  
Draft approved: 52 lots  
Registered: nil  
Remaining: 52 lots

Lionsgate (Zulich)  
780-6/91001  
Draft approved: 255 lots  
Registered: 50 lots  
Remaining: 205 lots

Corsi Hill  
780-6/89014  
Draft approved: 226 lots  
Registered: 133 lots  
Remaining: 93 lots

Moonlight Ridge  
780-6/05002  
Draft approved: 105 lots  
Registered: 45 lots  
Remaining: 60 lots

Greenwood Drive - Dalron  
780-6/07002  
Draft approved: 52 lots  
Registered: nil  
Remaining: 52 lots

1699 Paris - Condominium  
741-6/09002  
Draft approved: 12 units (1 lot)  
Registered: nil, Remaining: 12 units (1 lot)

1717 Paris - Condominium  
741-6/09001  
Draft approved: 15 units (1 lot)  
Registered: nil, Remaining: 15 units (1 lot)

Moonglo Extension (Michel)  
780-6/89019  
Draft approved: 607 lots  
Registered: 217 lots  
Remaining: 390 lots

Willow Ridge Estates  
780-6/02006  
Draft approved: 49 lots  
Registered: nil  
Remaining: 49 lots

Mallard's Landing  
780-6/88020  
Draft approved: 171 lots  
Registered: 161 lots  
Remaining: 10 lots

Pagnutti  
780-6/88016  
Draft approved: 129 lots  
Registered: 35 lots  
Remaining: 94 lots

KMS (Raft Lake)  
780-6/96003  
Draft approved: 27 lots  
Registered: nil  
Remaining: 27 lots

Mariposa (Titton)  
780-6/88019  
Draft approved: 107 lots  
Registered: nil  
Remaining: 107 lots

Brider  
780-6/93009  
Draft approved: 20 lots  
Registered: nil  
Remaining: 20 lots

Vintage Green  
780-6/01002  
Draft approved: 189 lots  
Registered: 53 lots  
Remaining: 136 lots

**R.L. Beattie**



0 1 2 4 km



**Loellen Park**  
**2006 Census**  
**Population: 32,514**  
**Households: 13,880**

Sunrise Ridge Estates  
 780-6/04007  
 Draft approved: 152 lots  
 Registered: 74  
 Remaining: 77 lots

Twin Lakes  
 780-6/03001  
 Draft approved: 72 lots  
 Registered: nil  
 Remaining: 72 lots

Keystone  
 780-6/06006  
 Draft approved: 110 lots  
 Registered: nil  
 Remaining: 110 lots

Greenwood Drive - Dalron  
 780-6/04004  
 Draft approved: 52 lots  
 Registered: nil  
 Remaining: 52 lots

Lionsgate (Zulich)  
 780-6/91001  
 Draft approved: 255 lots  
 Registered: 50 lots  
 Remaining: 205 lots

Corsi Hill  
 780-6/89014  
 Draft approved: 226 lots  
 Registered: 133 lots  
 Remaining: 93 lots

Moonlight Ridge  
 780-6/05002  
 Draft approved: 105 lots  
 Registered: 45 lots  
 Remaining: 60 lots

Greenwood Drive - Dalron  
 780-6/07002  
 Draft approved: 52 lots  
 Registered: nil  
 Remaining: 52 lots

1699 Paris - Condominium  
 741-6/09002  
 Draft approved: 12 units (1 lot)  
 Registered: nil, Remaining: 12 units (1 lot)

1717 Paris - Condominium  
 741-6/09001  
 Draft approved: 15 units (1 lot)  
 Registered: nil, Remaining: 15 units (1 lot)

Moonglo Extension (Michel)  
 780-6/89019  
 Draft approved: 607 lots  
 Registered: 217 lots  
 Remaining: 390 lots

**Loellen Park**

Willow Ridge Estates  
 780-6/02006  
 Draft approved: 49 lots  
 Registered: nil  
 Remaining: 49 lots

Mallard's Landing  
 780-6/88020  
 Draft approved: 171 lots  
 Registered: 161 lots  
 Remaining: 10 lots

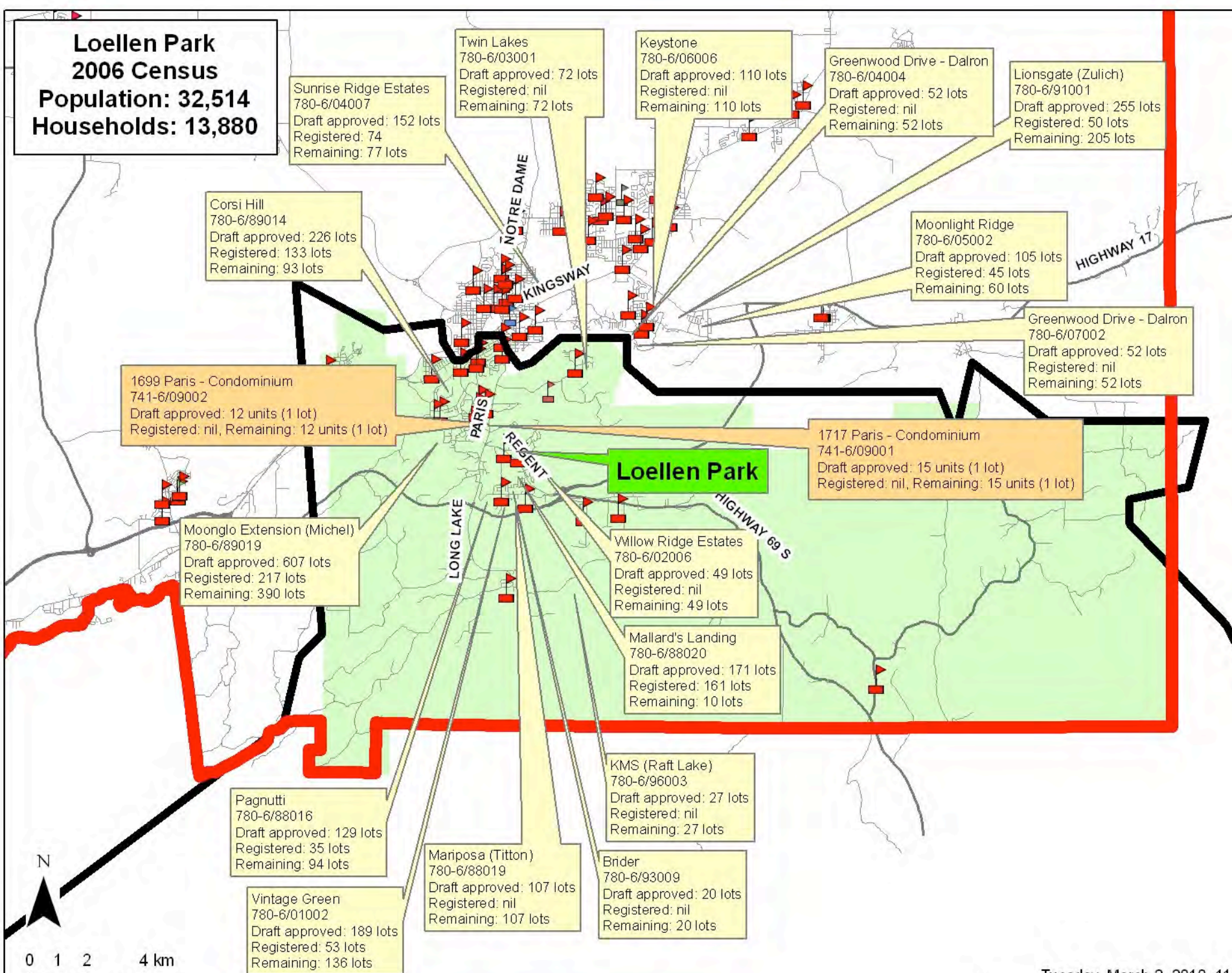
Pagnutti  
 780-6/88016  
 Draft approved: 129 lots  
 Registered: 35 lots  
 Remaining: 94 lots

KMS (Raft Lake)  
 780-6/96003  
 Draft approved: 27 lots  
 Registered: nil  
 Remaining: 27 lots

Mariposa (Titton)  
 780-6/88019  
 Draft approved: 107 lots  
 Registered: nil  
 Remaining: 107 lots

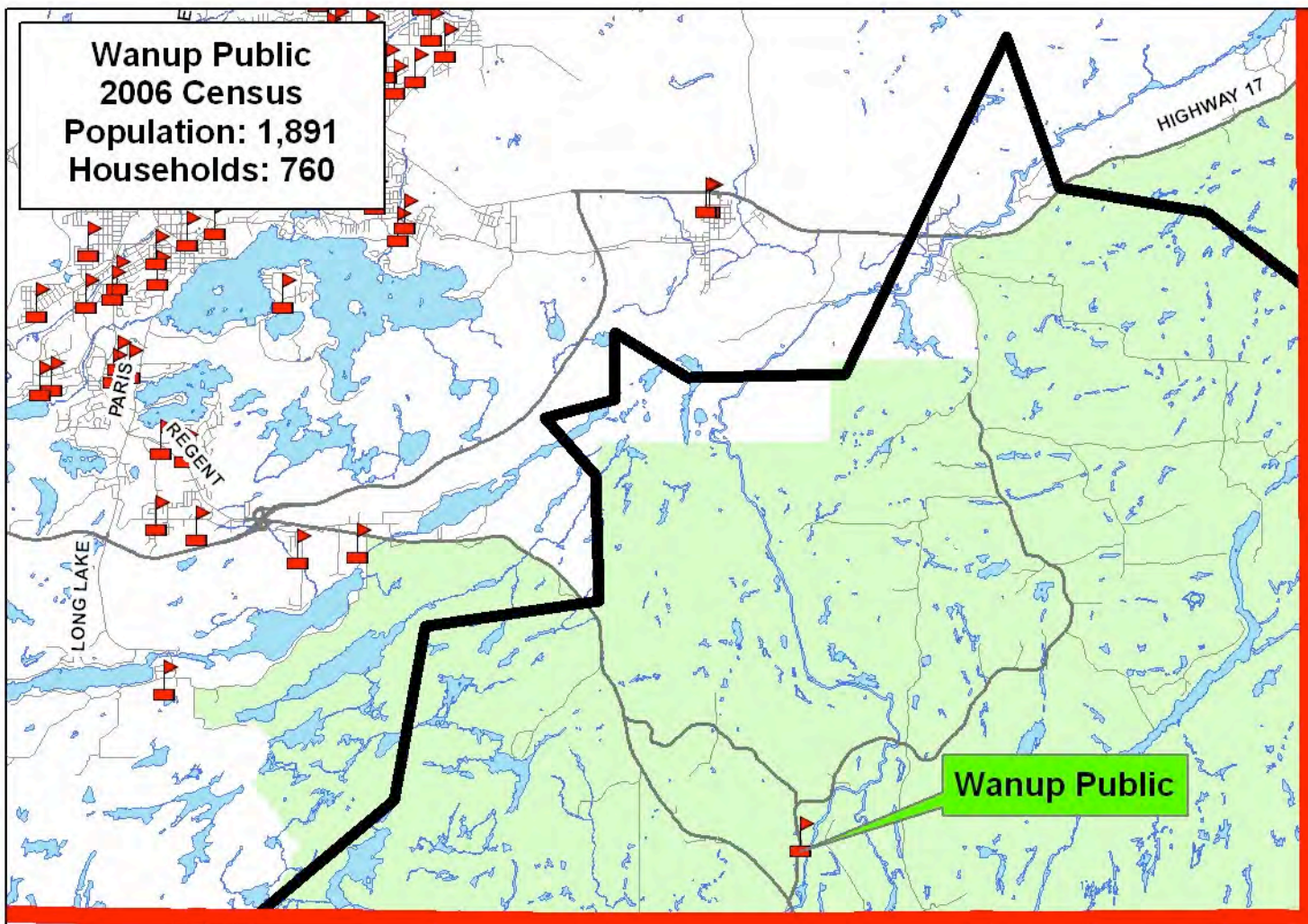
Brider  
 780-6/93009  
 Draft approved: 20 lots  
 Registered: nil  
 Remaining: 20 lots

Vintage Green  
 780-6/01002  
 Draft approved: 189 lots  
 Registered: 53 lots  
 Remaining: 136 lots





Wanup Public  
2006 Census  
Population: 1,891  
Households: 760



0 1 2 4 km