



# The Clock is Ticking

Don't Close Wanup School  
June 15, 2010

# What is special about Wanup Public School

Safe drop and pick up  
No traffic congestion



## Safe environment

Think bigger is better? Some people would have you believe this, however the Faculty of Education and School of Communication at Simon Fraser University completed a study published in February, 2007. I encourage you to read this [report](#) for yourself. Here is are some excerpts from the study's conclusion:





***“Research shows clearly that there is a growing expert consensus that small schools not only have an academic achievement advantage but also promote character development, emotional stability among their students, collegial working environment for teachers, as well as an increased public confidence and parent satisfaction with the schools their children attend.”***

***“Experience and research indicate that good small schools serve students, as Wanup is doing for it’s community and surrounding areas. Many decision makers, however, are reluctant to embrace small schools for fear that they are not economical and place an unnecessarily heavy burden on taxpayers .... that the migration of people from rural to urban areas seemed to require closing small schools in areas suffering depopulation.”***



**“Proper maintenance is important because many older schools, anchored in their communities, are also small schools, which may become vulnerable to closing if they are not kept in good repair.”**

**We are lucky only minor repairs are needed to Wanup PS are: baseball diamond backstop repair, roadside fencing and play ground equipment that School Council had fund raised for but was recently damaged by mischief.**

**“The benefits of renovating a school instead of building a new one go beyond the purely economical.”**



**Research demonstrates that “Smaller schools provide benefits of reduced discipline problems and crime, reduced truancy and gang participation, reduced dropout rates, improved teacher and student attitudes, improved student self-perception, student academic achievement equal to or superior to that of students at larger schools, and increased parental involvement.”**

**“Smaller schools can provide these benefits while not increasing administrative and construction costs.”**

***The Toronto Star – March 26, 2010  
Ontario Government facing record \$14.1 billion  
dollar deficit.***



“the investment because of the value they add to student learning and community cohesion,” and it is suggested that increase funding of its small schools and programs, should be thought of as preservation of culture, education, knowing your neighbour, **re-building the social aspect of community”**



# Wanup Public School

- Serves as the local communities park - recreational area — if this disappears will the City look at replacing this for the community as it has in other communities now part of the City of Sudbury
- **Long bus commutes** aren't the only argument to look away from tomorrows options.
- Can Wanup PS fulfill the education needs of today's students within a Board defined catchment area? **YES!**
- Is the school in good repair to make this possible? **YES!**
- **Then what exactly is the argument for closing Wanup Public School??**



## ***Partnerships and Shared Use of Facilities***

“Forming partnerships with other organizations can create a win-win situation.

Many areas have found partners within the community for public and private facilities that can offer specialized programs for students.

Other schools lease space in facilities that are under-used, including weekend and vacation time, to public and private organizations, thereby sharing expenses.

***Smaller, Safer, Saner Successful Schools”***

***Tae Kwon Do – RF Clubs***

***Sunday School – Men's Basketball – Health unit – Voting – Woman's Volleyball***



“Communities should treasure their small schools and policy-makers should protect these schools with sound policies and financial support.

Legislators and other decision-makers should implement policy that limits the number of students in a facility to the range, as well as revise acreage requirements, limitations on renovation, and outdated codes and regulations that promote construction of large schools.”



“Small schools offer the best place to create environments in which students, teachers, families, and members of the community can teach and learn effectively.

Furthermore, this challenges the notion that small schools are excessively expensive by showing that facilities for small schools can be built cost effectively.”



# Keep Wanup Public School

- The message is clear: when thinking about schools and school facilities, *think small*.
- Wanup PS has the facilities and room to accommodate
- Over utilization of other schools to increase funding cannot be used to close an asset of the Board



# Wanup Public School

- Getting ready to build new schools will take more than a five (5) year planning process, and is this really meeting the two principals of the ARC? Reduction of surplus space? How can you be reducing space when you are building new : expanding : and closing a perfectly “great” school!!!!!!
- Long term strategic planning is needed to identify clearly the most efficient and economical use of **existing schools** over “new green” initiatives.



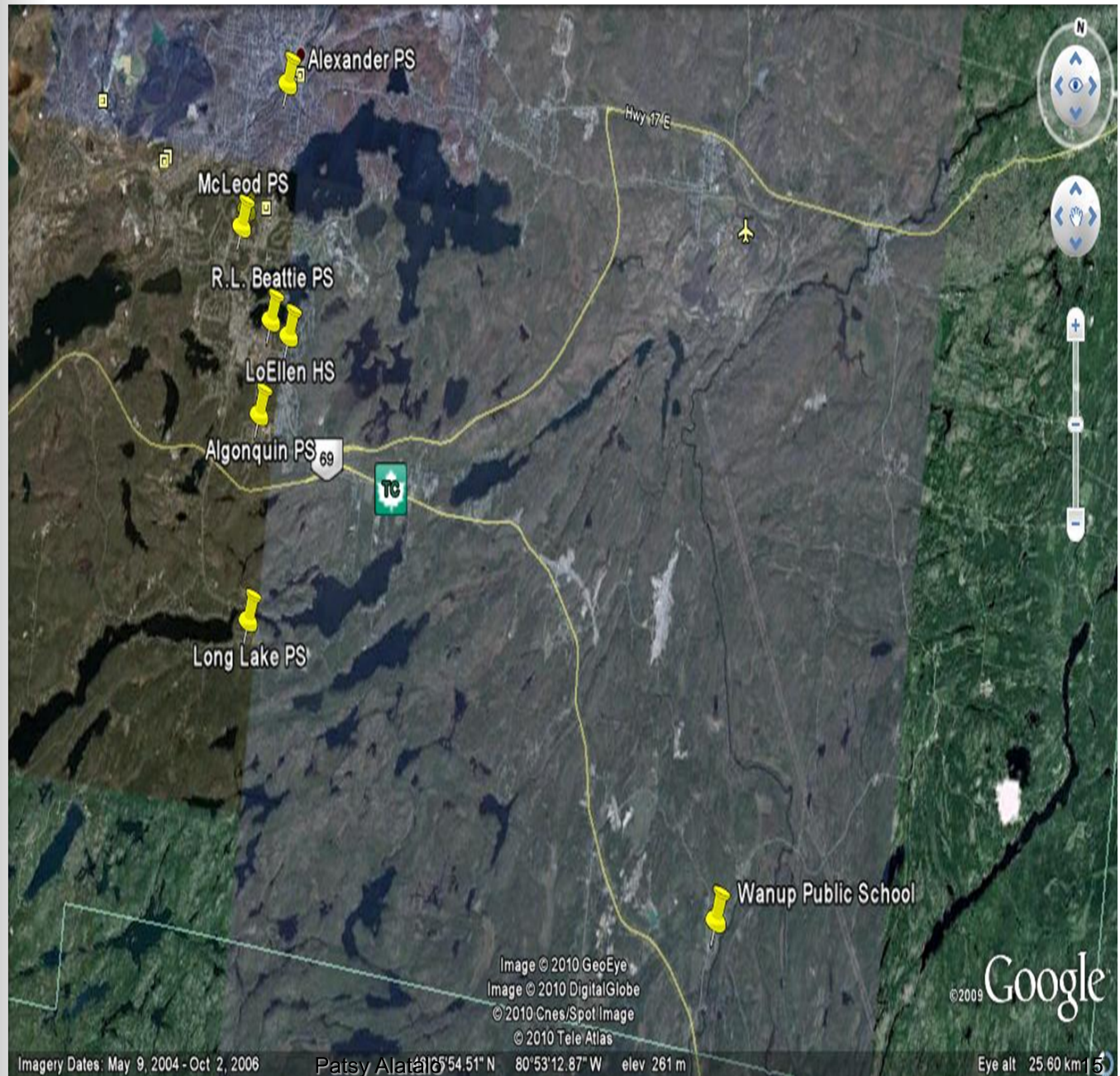
## Wanup Public School

- Too many uncertainties in today's economic climate
- Four Boards competing for student interests
- Loss of Wanup PS may erode support for the Rainbow District School Board from local taxpayers



## Wanup Public School

- Wanup Public School services a large geographic area with a stable population
- 18 new births in the last year!
- New families moving to the “country” within the City of Greater Sudbury
- Accessible to all highways & close!





## Options:

- Wanup Public School – geographical does not fit in with the review of the “4 corner schools”
  - Services areas outside the city limits, which lessens the commute for those in the area to receive quality education (which promotes: more home time: more family time);
  - The facility to accommodate both French immersion and English programming;
  - The boundaries need to be re-adjusted to assist with over Utilization and the catchments area's;
  - Just received approval for an After School Program;
  - Only recreational area for multiple communities.

“If we close the school, it means we are failing the future,”

"No one but those in the field of education would reward the winners by closing them."



# Come Join Us in Wolverine Country Wanup PS Rocks!