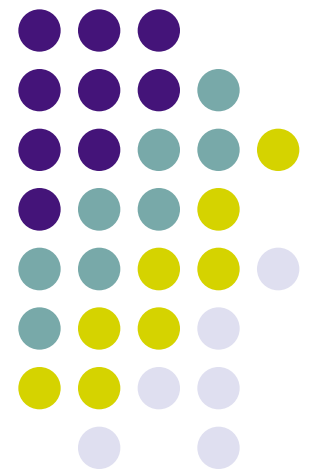


Wanup Public School

ARC Presentation

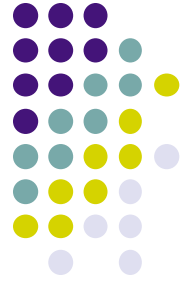
June 15, 2010



Birds Eye View



Rainbow District School Board



- Financial Overview
 - Board relies on the province for the majority of its funding
 - Much of the schools board's revenue is determined by enrolment
 - As enrolment declines, so does revenue
 - Current projections indicate that enrolment will continue to decline over the next 5 years – based on current birth rates and immigration patterns.

Accommodation Review Process



- **Report chronicles possible future school closures**
- **Posted By BY RACHEL PUNCH, THE SUDBURY STAR 2009 Archives**
- **Notable Outcome: Close Long Lake PS and merge with Algonquin PS on one site**



Rainbow District School Board

- The Board currently has more pupil places (on the ground capacity or OTG) than it needs and this will continue as enrolment declines
- Some schools are over-utilized – others under utilized – Why? Catchment Zones - Programming?
- As schools age, maintenance costs increase, or do they? What is the cost of building new? Green? How big or how small?



Utilization Statistics

	Capacity	2009-10	2013-14
System:			
Elementary	10,854	78%	74%
Secondary	8,647	70%	69%
Total	19,501	78%	72%

Utilization Rating:

➤ 79%

70% - 79%

50% - 69%

< 50%

Good

Fair

Poor

Critical

**OVERALL – SCHOOL UTILIZATION
RATES WILL REMAIN FAIR FOR
BOTH ELEMENTARY AND
SECONDARY SCHOOLS**

French Programming & Catchment Boundaries



School	Classes	French Immersion	% Students from outside boundary
Alexander PS	JK – 8	Yes	13% or 36 students
Algonquin PS	JK – 8	No	11.58% or 31 students
Long Lake PS	JK – 6	No	3% or 2 students
MacLeod PS	JK – 8	No	7.15% or 33 students
RL Beattie PS	JK – 8	Yes	5.48% of 20 students
Wanup PS	JK – 8	No	0%
Monetville PS	JK – 8	No	18.5% or 17 students
Lo-Ellen SS	9 – 12	Yes	
Lockerby Composite SS	9 – 12	Yes	

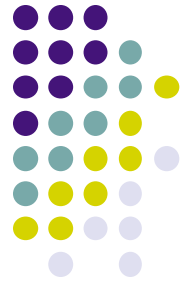
First 4 Accommodation Review Committee meetings confirmed:



All schools under review:

- **Represent value to the Students**
- **Represent value to the Board**
- **Represent value to the Community**
- **Represent value to the Economy**

Common values identified by ARC for all schools – now what?



ARC Outcomes thus far.....

- 11 proposals were finally released from the Board for ARC review on April 12, 2010
- 9 specifically targeted closing Wanup PS
- Outright rejection of “super school” by ARC (Grade 7 – 12)
- LoEllen Park SS & Lockerby Composite irrelevant from elementary school perspective
- Status quo essentially assured for RL Beattie PS & Alexander PS given French Immersion programming & Monetville PS – long distance



ARC Outcomes thus far.....

- Inference that new school(s) possible for McLeod PS and/or Algonquin PS
- Presentation of three (3) modified proposals by ARC to the public on May 18th, 2010 – two (2) of which target closing Wanup PS
- Confusion regarding multi-grade learning, staffing allocations and full day JK & SK availability at affected schools



ARC timing

- Initiating an Accommodation Review in February with a culmination of decisions in November wreaks havoc with individual school early registration during the spring months
- Contributes significant community anxiety to a process that should be more engaging of the communities affected
- Better suited for a fall launch and spring decision

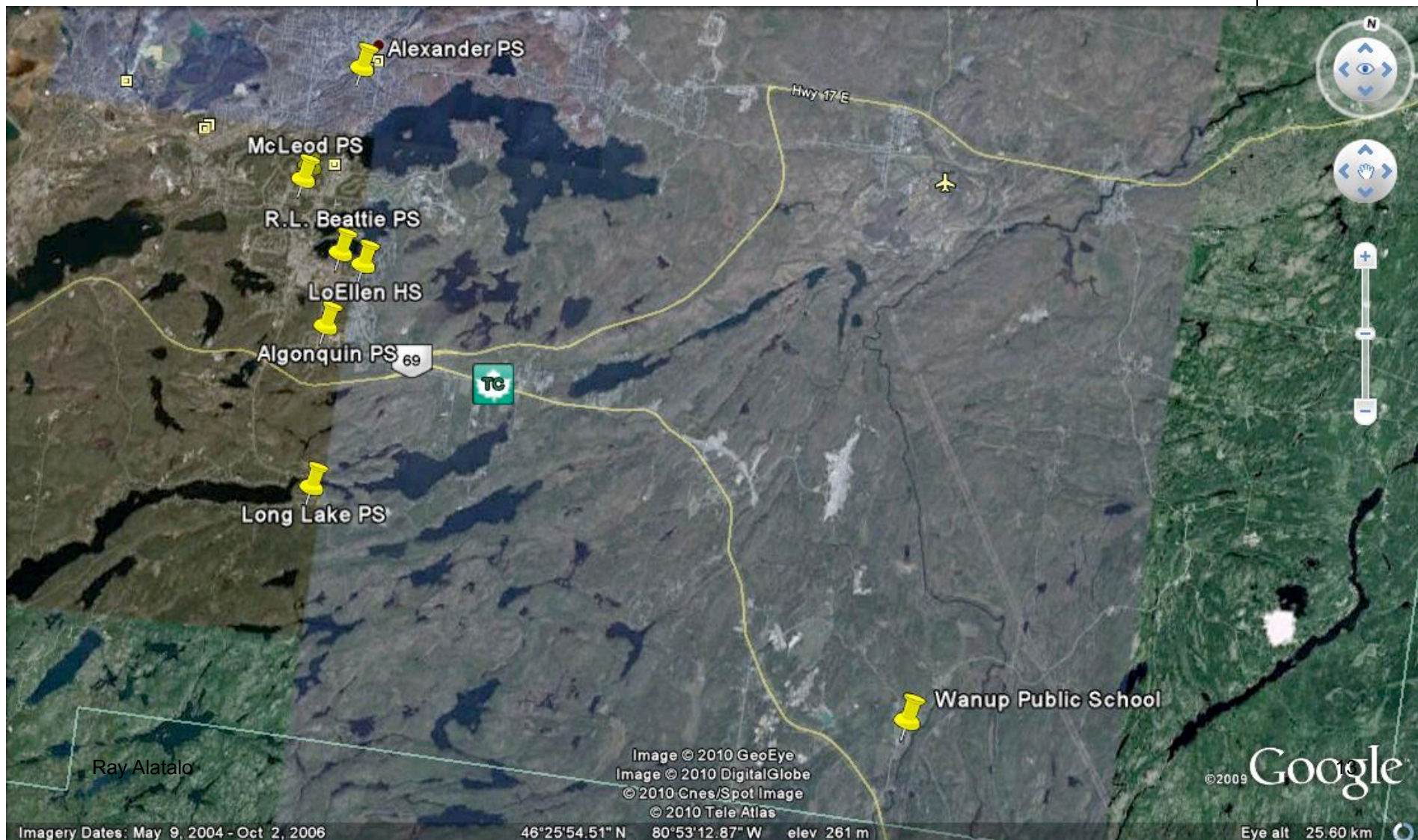
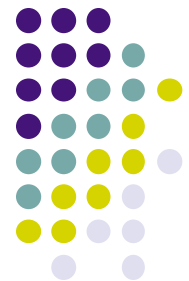


Interpreting the data

Planning and possibilities: The report of the declining enrolment working group - 2009 already identified:

- strong possibility of multi-grades in schools,
- current funding formula's not flexible enough to stop competition between schools for students – over-utilization.

Sudbury South Schools



Planning and possibilities: The report of the declining enrolment working group | 2009



Although most boards are experiencing a decline in enrolment, the decline in individual schools is not always reflective of the board-wide rate. For example, some boards with relatively stable enrolment have experienced a decline in individual schools, but growth in other schools.

“Students for dollars” Exceeding Capacity to guarantee funding

Planning and possibilities: The report of the declining enrolment working group | 2009



- As schools become smaller, the number and variety of programs offered may be reduced.....
- In some cases, a school's enrolment may decline to the point where the educational viability of the school is in question. In others, the range of extracurricular activities available to students may be diminished.
- *The number of multi-grade and multi-level classes may increase. (Is this education?)*

Planning and possibilities: The report of the declining enrolment working group | 2009

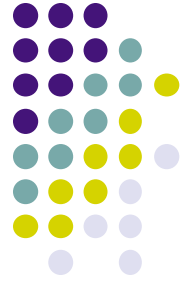


- Schools may face reductions in the following areas:
 - Teaching staff
 - library and guidance staff, supervisory staff, vice—principals, and secretarial staff
 - the availability of services provided by social workers and speech-language pathologists
 - Aside from the obvious impacts of losing staff in these areas, staff reductions also may affect the ability of remaining staff to adequately supervise students.



Underutilization by chance?

- By focusing on the current funding formula – some schools have increased their capacity beyond their limits – “teaching in change rooms” – “inadequate gym time”
- Programming seems to be limited to entice students to specific schools – remaining schools unable to secure resources and support to provide before & after programming – limiting community buy in



Wanup Public School

- **NOTE:** Current enrolment numbers do not take into account:
 - Influence of an increased catchment area
 - Availability of Before and After programming – more suitable for working families to reduce pressures on Algonquin PS and MacLeod PS
 - Possible provision of french language – dual track – english and french immersion – changing demographics of catchment zone



ARC Mandate

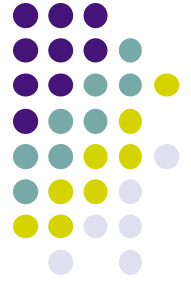
- The Accommodation Review Committee was to develop options for student accommodation to:
 - maximize student learning within the resources available to the Board
 - and present their findings and recommendations to the Board's Administrative Council.



Current Catchment Zones

- By eliminating Long Lake PS – utilization rate for Algonquin PS will soar to 126%!
- McLeod PS is at 127%
- Alexander PS is at 95%
- RL Beattie PS is at 101%
- and Monetville PS is too far away!

Can closing Wanup PS and keeping Long Lake PS open resolve this dilemma? **NO**



Our Proposal

Complete the review based on the original principles of ARC

- all students will have access to the best programming possible in QUALITY facilities, and
- eliminate the surplus space

Keep Wanup Public School Open

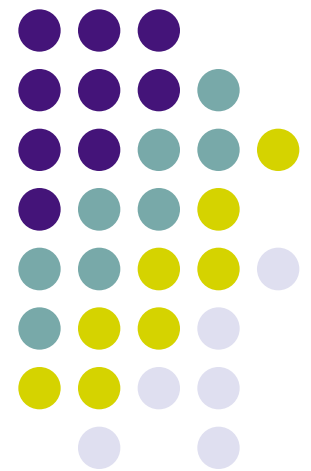


- Long Lake PS was slated for closure given the current school condition, limited programming (JK to Gr 6) and close proximity to Algonquin Public School
(Report chronicles possible future school closures – Sudbury Star)
- New school facilities required given structural condition of McLeod PS
- Capital Improvements have already been made to Alexander PS and Algonquin PS

FULL DAY JK-SK FALL 2010

Wanup PS students already face
a 40 - 50 minute bus ride – with
new full day JK/SK for 2010-11 –
is this sufficient for 4-5 year olds?

Proposed new catchment zone
still within 50 minute zone given
proximity to highway 69



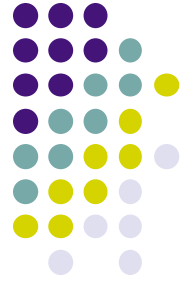


FULL DAY JK-SK FALL 2010

Toronto Star Wednesday June 9, 2010

- 15% of Ontario schools offering full day JK-SK are expected to have before and after programming
- Low uptake on early registrations across the Province because Boards have yet to divulge which schools will be offering what services – must do so by the end of June.

FULL DAY JK-SK FALL 2010



School Council has already received confirmation from the YMCA – Childcare & Camping Services that Wanup PS qualifies for a recreational drop in program – 3:00 pm – 6:00 pm starting in September.

email: Melissa Pitfield June 2, 2010



Keep Wanup Public School

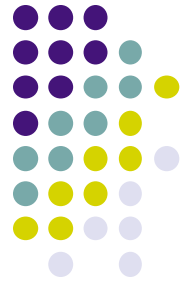
- If Wanup PS is closed – there is no capacity at the remaining public schools – nor is there a feasible method to address student accommodation during construction of *new* schools
- Since Wanup PS is more than 20 km's from Algonquin PS – the elementary school review portion of ARC has really been between Algonquin & Long Lake PS's, McLeod PS and Alexander PS.

Planning and possibilities: The report of the declining enrolment working group



- The School Operations and School Renewal Allocations cover the costs of heating, cleaning, renovating, and repairing schools. When enrolment declines, a school may be underutilized, but the costs of maintaining the school do not decline correspondingly. These two allocations are based in part on enrolment, but include

Planning and possibilities: The report of the declining enrolment working group



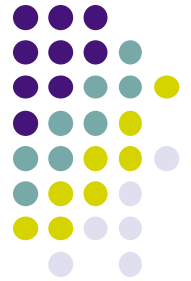
“top-up” funding for schools operating at less than full capacity. The top-up increases a board’s total revenue for the operating and renewal costs of its rural and supported schools up to the amount that would be generated if the schools were operating at 100 per cent capacity.

Planning and possibilities: The report of the declining enrolment working group



Schools that are not designated as rural or supported generate top-up funding of up to 20 per cent higher than the actual utilization rate. For example, a school with a utilization rate of 60 per cent would be treated as if it were operating at 80 per cent.

People for Education Ontario School Closings Report 2009



- QUICK FACTS

- 40% of schools currently have school-based childcare facilities.
- 32% of schools report the building is used by other organizations, including Early Years programs, public health, and YMCA.

People for Education Ontario School Closings Report 2009



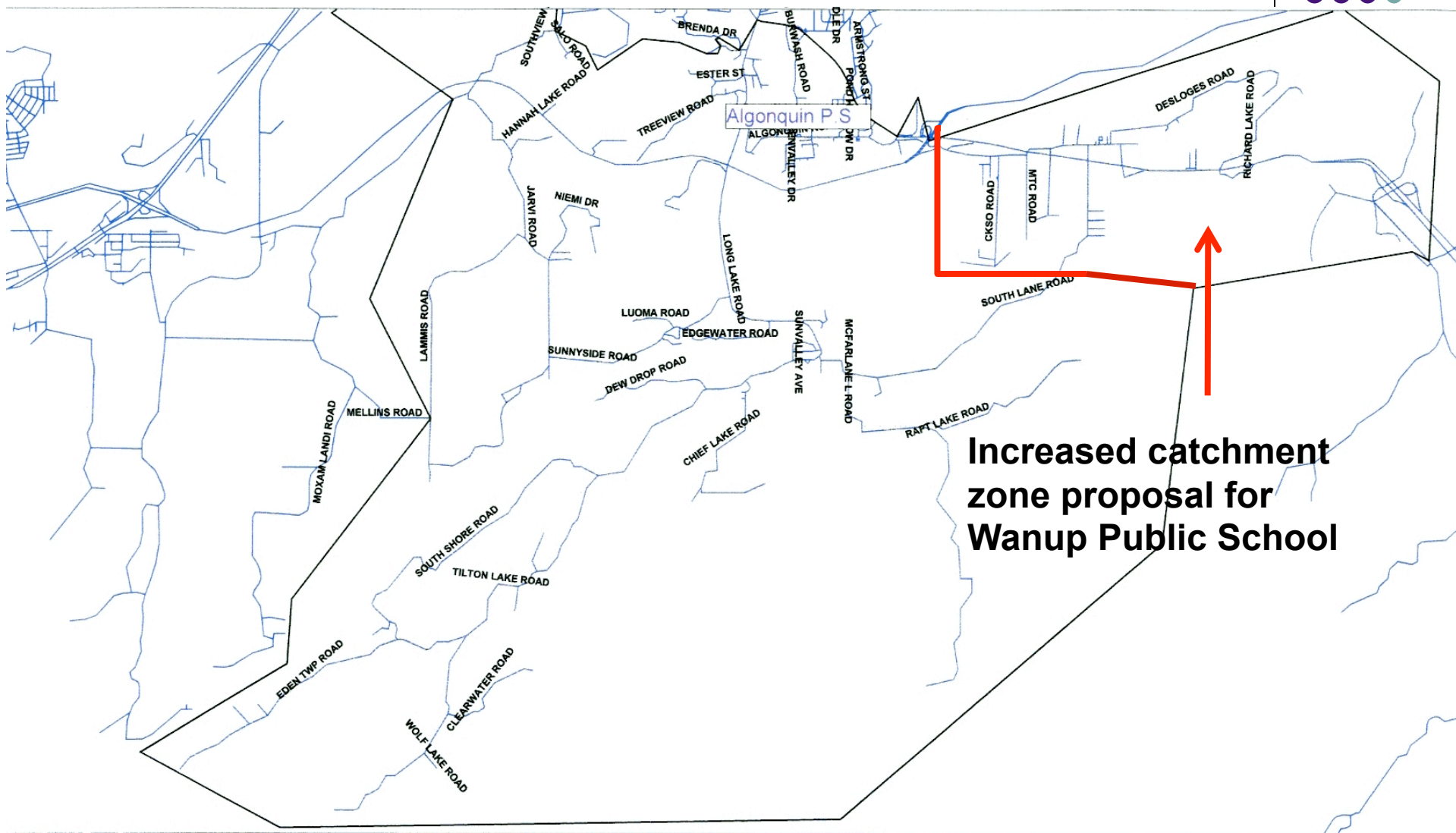
- QUICK FACTS
 - Finland has the smallest average school sizes among OECD* countries—and the most successful students.
 - Spending on early childhood programs generates at least \$1.7 for every \$1 spent.
 - *

*Organisation for Economic Co-operation and
Development (OECD)*



Questions remaining?

- What is the role of the Sudbury Student Services Consortium on Board costs and student travel times?
- What is the direction of the Board with respect to full day JK-SK services at the schools?
- Can increasing Wanup PS boundaries alleviate the existing pressures on the other schools?



**Increased catchment
zone proposal for
Wanup Public School**

Algonquin Public School
Attendance Boundary
7 - 8



In Closing.....

- Wanup PS has the OTG capacity of 233 students in it's current condition
- Current enrollment plus out of boundary students at Algonquin PS & McLeod PS = 155 students – enrolment circa 2005 - 66% Utilization Rate
- Improved boundaries could boost these numbers to over 70%



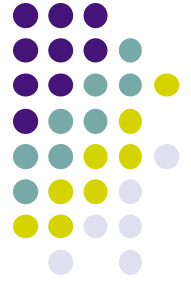
Trustees

- Will have to make the final decision based on sound economic planning and financial capability
- Eliminating a facility to boost over-crowding is not going to resolve the problem today
- Maintain current programming with Before and After programs and re-evaluate in five years.
- By then the “new” schools may be ready.



Trustees

- Minor capital improvements (baseball backstop, fencing, playground, & school sign) at Wanup PS have been stalled by the Board – presumably awaiting the outcome of the ARC- ongoing School Council concern
- And note, Sudbury East residents enjoy a lower tax rate than the citizens of the City of Greater Sudbury – the future of settlement is outside the CGS boundary along the new 69 Highway!



*PRESERVE
WOLVERINE HABITAT
KEEP WANUP PS
OPEN*

www.savewanup.com