



City of Greater Sudbury

An overview of demographics &
development in the City of Greater
Sudbury

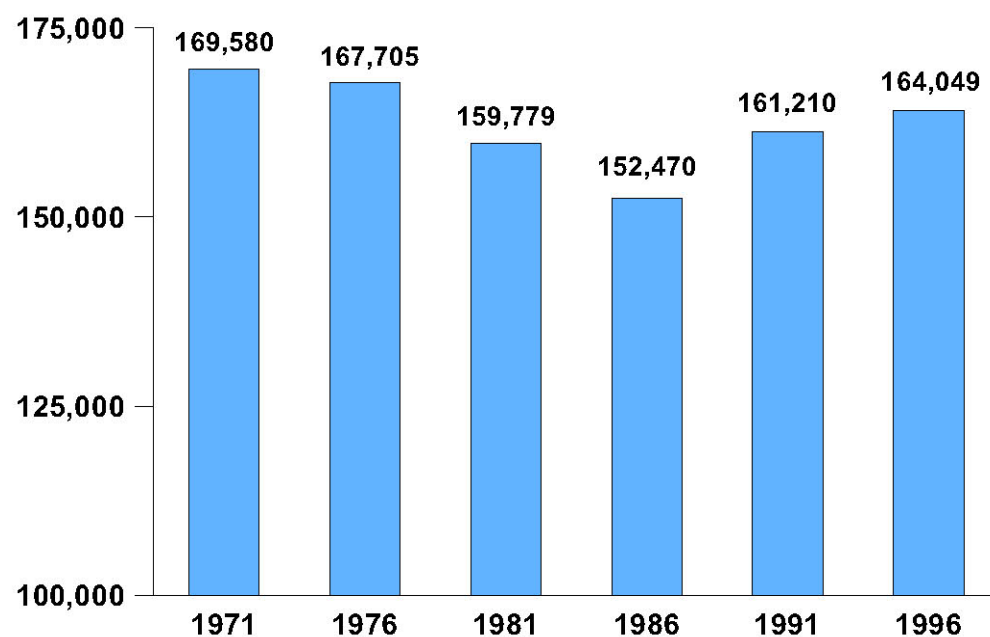
April 9th, 2008

Keyfacts Population

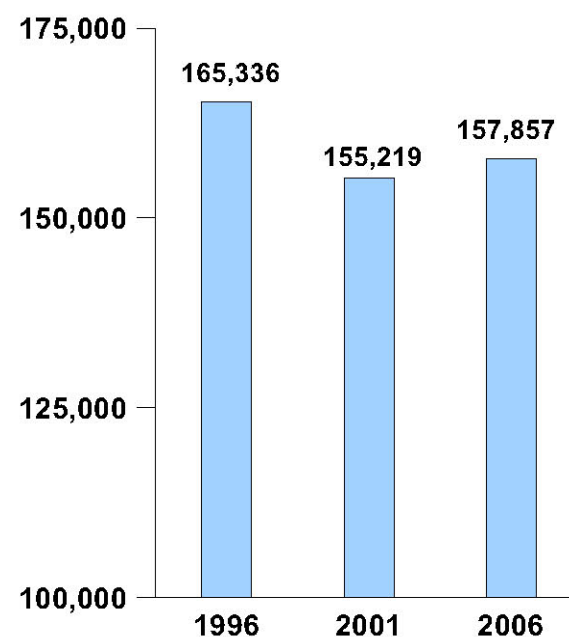
PO Box 5000, STN A
200 Brady Street
Sudbury, ON P3A 5P3
(705) 671-2489



Total Population 1971 - 2006



Regional Municipality of Sudbury



City of Greater Sudbury

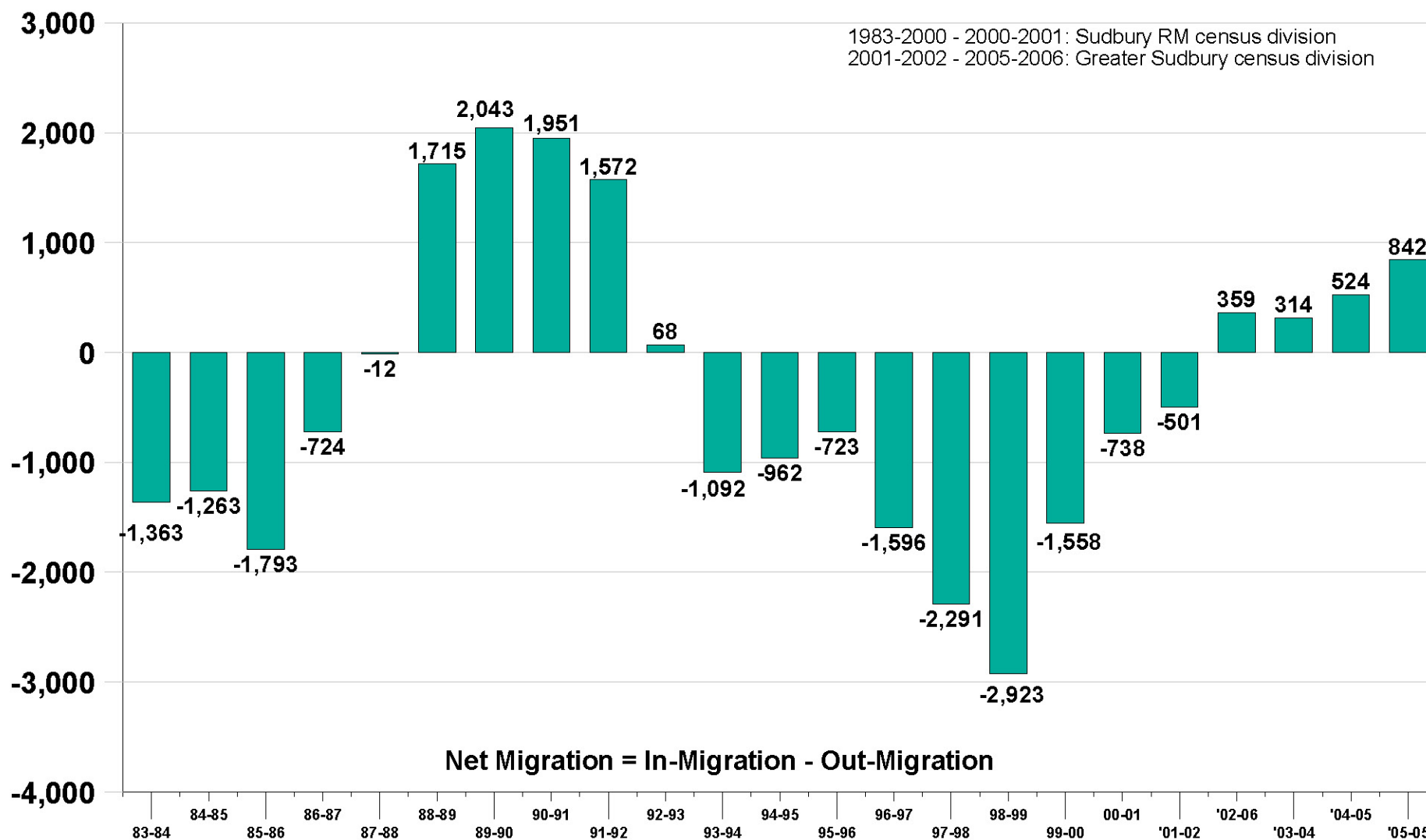
Source: Statistics Canada; 1971, 1976, 1981, 1986, 1991, 1996, 2001, 2006 Census of Canada.

Keyfacts Population

PO Box 5000, STN A
200 Brady Street
Sudbury, ON P3A 5P3
(705) 671-2489



Net Migration 1983 - 2006



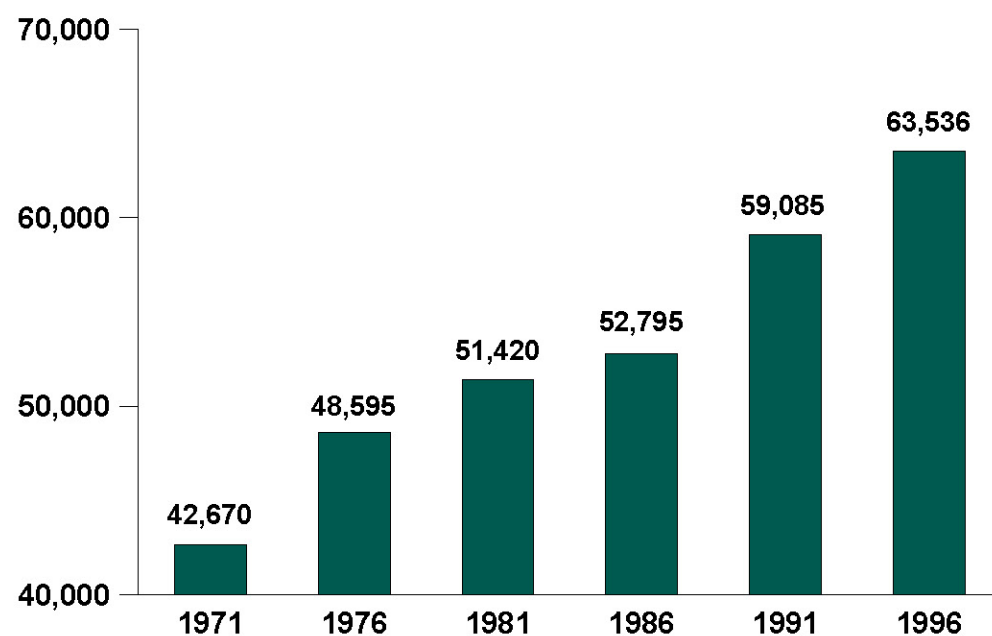
Source: Statistics Canada; *Migration Estimates*, Cat. # 91C0025; migration estimates based on taxation records.
The period of reference extends from April of one year to April of the following year.

Keyfacts Population

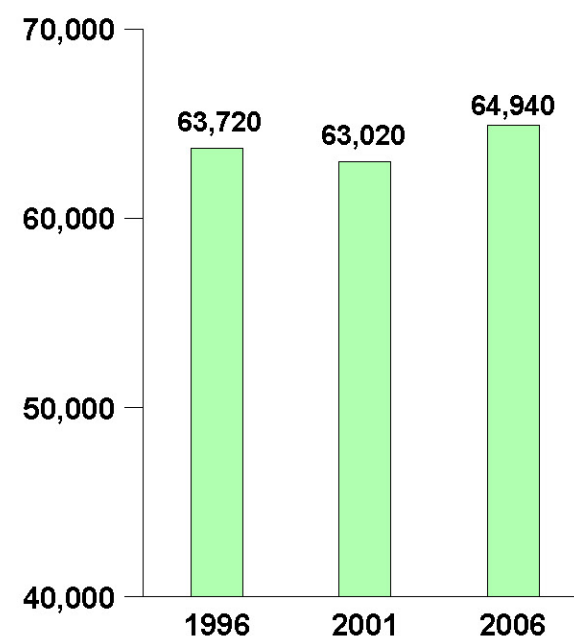
PO Box 5000, STN A
200 Brady Street
Sudbury, ON P3A 5P3
(705) 671-2489



Total Households 1971 - 2006



Regional Municipality of Sudbury



City of Greater Sudbury

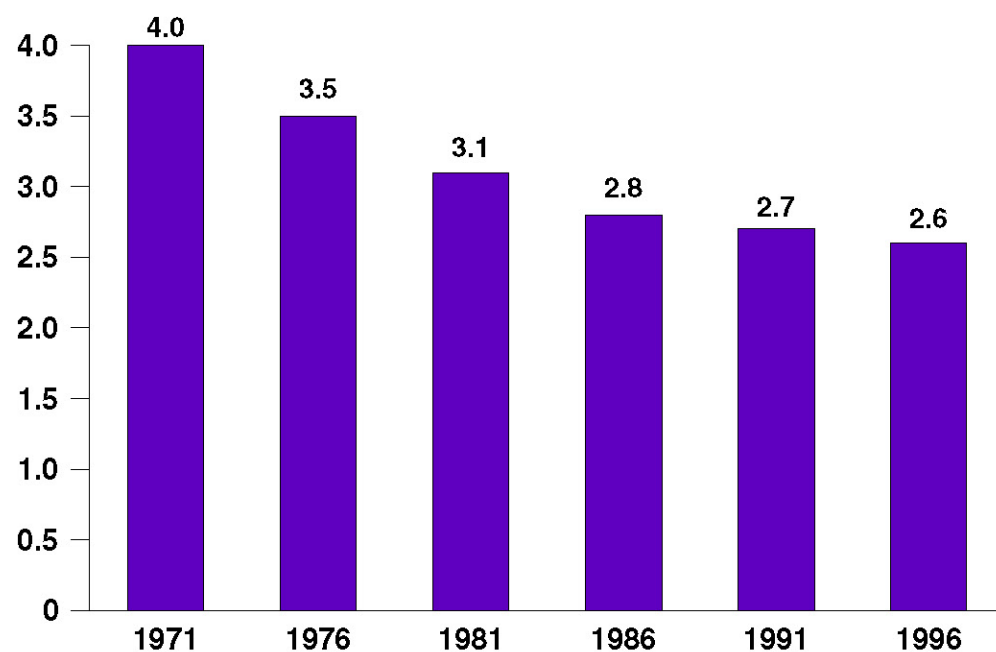
Source: Statistics Canada; 1971, 1976, 1981, 1986, 1991, 1996, 2001, 2006 Census of Canada.

Keyfacts Population

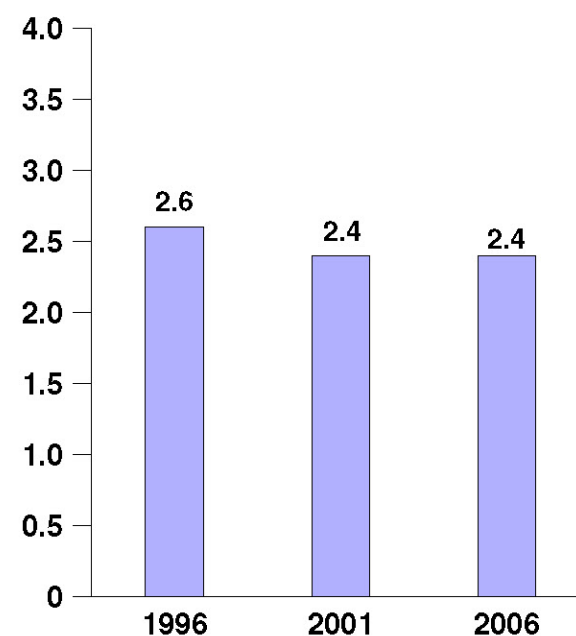
PO Box 5000, STN A
200 Brady Street
Sudbury, ON P3A 5P3
(705) 671-2489



Average Household Size 1971 - 2006



Regional Municipality of Sudbury



City of Greater Sudbury

Source: Statistics Canada; 1971, 1976, 1981, 1986, 1991, 1996, 2001, 2006 Census of Canada.

2006 Census: Population Change

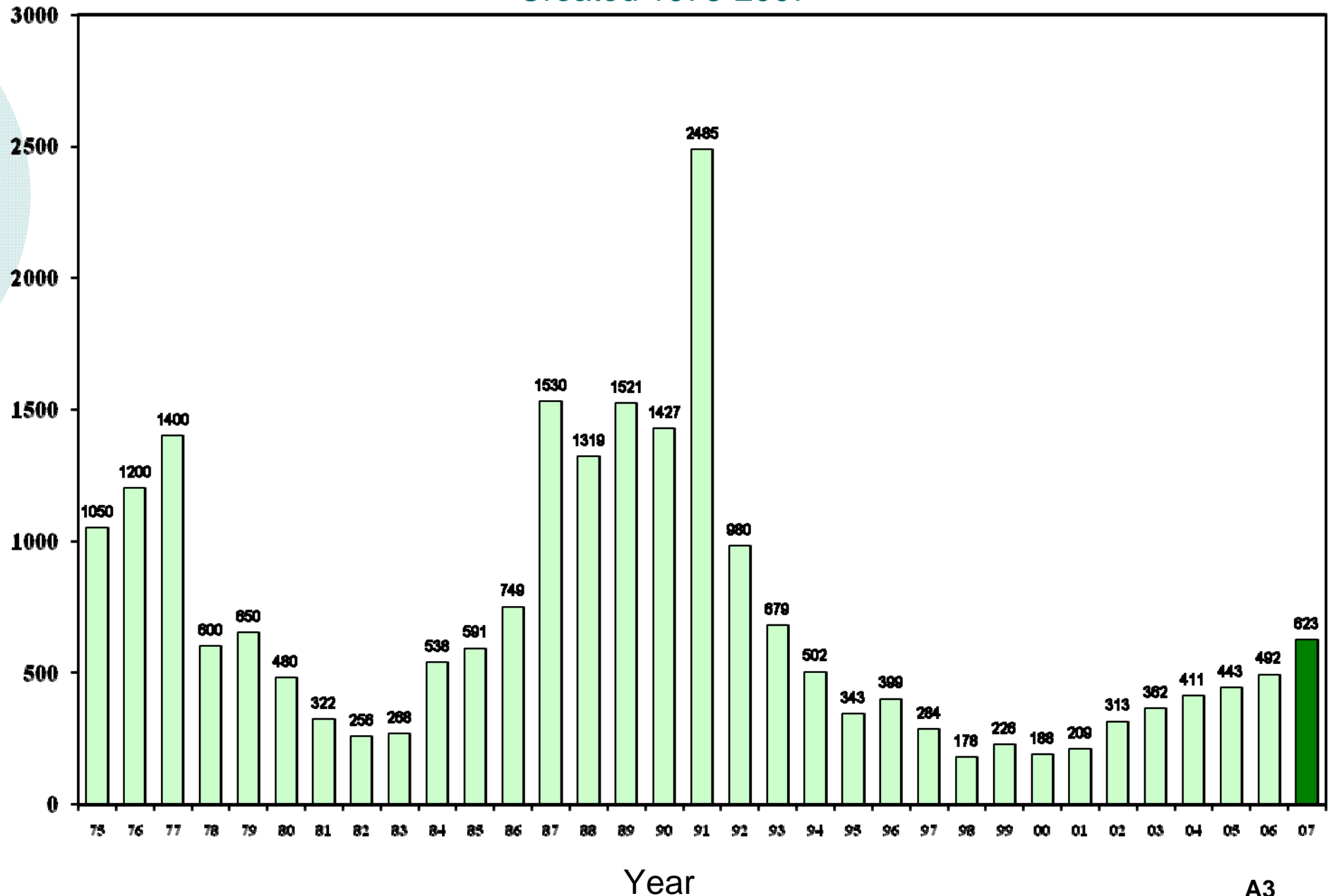
City of Greater Sudbury

Area	2001	2006	% change
Capreol	3,486	3,492	0.2%
Nickel Centre	12,672	12,629	-0.3%
Onaping Falls	4,887	4,742	-3.0%
Rayside Balfour	15,046	14,359	-4.6%
Sudbury	85,354	88,855	4.1%
Valley East	22,374	22,664	1.3%
Walden	10,101	10,158	0.6%
former Regional Municipality	153,920	156,899	1.9%
New Townships	1,299	958	-26.3%
City of Greater Sudbury	155,219	157,857	1.7%

2007 Building Permit Tracking Report

Total Number of Residential Units Created 1975-2007

Total number of
residential units



Source: Building Services Section, Building Permit Statements 1975-2007

Prepared by the Planning Services Division

New Residential Units by Type & Area

1997-2007

Area		1997	1998	1999	2000	2001	2002	2003	2004	2005	2006	2007	1997 - 2007
Capreol													
	single family	1	2	2	-	1	-	-	-	-	2	2	10
	two family	-	-	-	-	-	-	-	-	-	-	-	0
	multi-unit	-	-	-	-	-	-	-	-	-	-	-	0
Nickel Centre (Garson, Coniston, Skead)													
	single family	38	14	16	16	16	26	34	49	52	43	76	380
	two family	6	-	-	-	-	-	2	2	-	2	2	14
	multi-unit	-	-	-	-	-	-	-	-	-	-	-	0
Onaping Falls (Dowling, Onaping, Levack)													
	single family	6	4	4	3	2	7	5	2	9	11	12	65
	two family	-	-	-	-	-	-	-	-	-	-	-	0
	multi-unit	-	-	-	-	-	-	-	-	-	-	-	0
Rayside-Balfour (Azilda, Chelmsford)													
	single family	26	22	13	14	7	29	23	45	40	45	39	303
	two family	2	2	-	-	-	2	8	2	-	6	6	28
	multi-unit	-	-	-	-	-	-	-	-	-	4	4	8
Sudbury													
	single family	84	54	59	83	104	155	154	165	150	166	164	1,338
	two family	4	2	2	-	-	-	2	6	12	12	15	55
	multi-unit	20	-	-	-	-	4	-	4	4	7	47	86
Valley East (Val Caron, Val Therese, Hanmer)													
	single family	55	42	34	28	32	52	66	76	93	123	155	756
	two family	-	-	-	2	-	-	-	-	-	-	-	2
	multi-unit	-	-	-	-	-	-	-	-	-	-	-	0
Walden (Lively, Naughton, Whitefish)													
	single family	28	22	15	21	23	20	24	33	44	47	57	334
	two family	-	-	-	-	-	-	-	-	-	-	-	0
	multi-unit	-	-	72	-	-	-	-	-	-	-	-	72
New Townships													
	single family	n/a	n/a	n/a	n/a	4	3	3	4	6	7	2	29
	two family	n/a	n/a	n/a	n/a	-	-	-	-	-	-	-	0
	multi-unit	n/a	n/a	n/a	n/a	-	-	-	-	-	-	-	0
total:		270	164	217	167	189	298	321	388	410	475	581	3,480

Number of new units
created in 2007 in the
City of Greater Sudbury
by Area

Year 2007				
Area		Number of Units		% of CGS total
Sudbury		226		38.9%
	South End	103		17.7%
	New Sudbury	23		4.0%
	Minnow Lake	46		7.9%
	Old City	40		6.9%
	rural areas	14		2.4%
Capreol		2		0.3%
	Town	2		0.3%
	rural	0		0.0%
Nickel Centre		78		13.4%
	Garson	64		11.0%
	Coniston	4		0.7%
	Skead	1		0.2%
	Falconbridge	1		0.2%
	Wahnapiatae	1		0.2%
	rural	7		1.2%
Onaping Falls		12		2.1%
	Dowling	6		1.0%
	Onaping	0		0.0%
	Levack	1		0.2%
	rural	5		0.9%
Rayside-Balfour		49		8.4%
	Chelmsford	26		4.5%
	Azilda	15		2.6%
	rural	8		1.4%
Valley East		155		26.7%
	Val Caron	34		5.9%
	Val Therese	67		11.5%
	Hanmer	29		5.0%
	rural	25		4.3%
Walden		57		9.8%
	Old Lively	4		0.7%
	Mikkola	34		5.9%
	Naughton	4		0.7%
	Whitefish	0		0.0%
	rural	15		2.6%
New townships		2		0.3%
	Northeast	0		0.0%
	Southeast	2		0.3%
total:		581	581	100.0% 100.0%

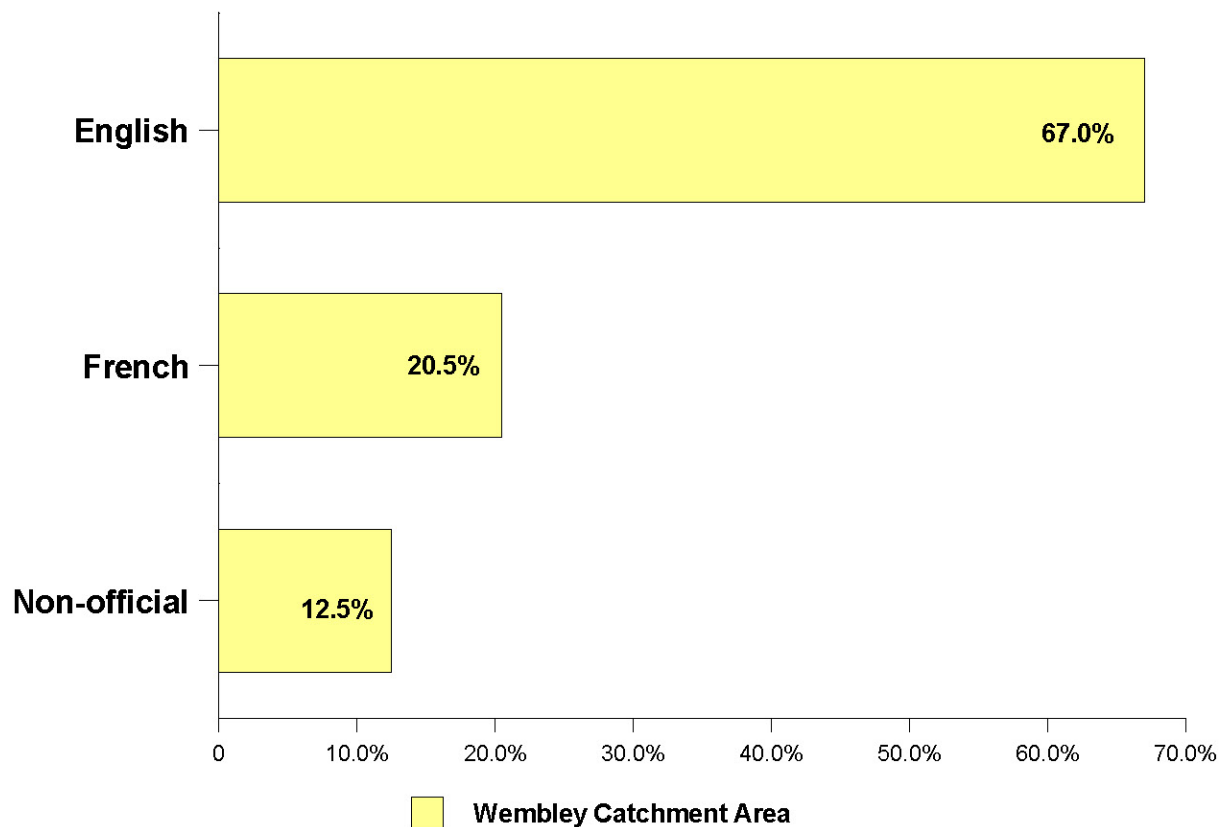
Population Trend 1996-2006 (Ages 0-14)

Approximate Wembley 7-8 Catchment Area (Census Tracts 2, 3, 4, 5, 10, 12)				
	1991	1996	2001	2006
Age Group				
0-4	1210	1235	975	950
5-9	1070	1050	895	880
10-14	1105	995	915	890
Total 0-14	3385	3280	2785	2720

Keyfacts



Population by Mother Tongue for the Wembley Public School Catchment Area 2006 Census



Mothertongue: the first language learned at home in childhood and still understood.

Source: Statistics Canada; 2006 Census of Canada. Data is for Census Tracts 2, 3, 4, 5, 10, 11 & 12.

**Dissemination Areas (2006)
for Wembley Public School Grades 7 & 8**

**2006 Census
Population: 19,925
Households: 9,850**

Sunrise Ridge Estates
780-6/04007
Draft approved: 152 lots
Registered: 34
Remaining: 118 lots

Corsi Hill
780-6/89014
Draft approved: 226 lots
Registered: 113 lots
Remaining: 113 lots

Wembley
Public School

Wembley 7-8 catchment area

Subdivision Information as of March
2008

Monday, March 31, 2008 11:03:31 AM
C:\Mapping\School_Board\Wembley_7-8_DA.mxd

