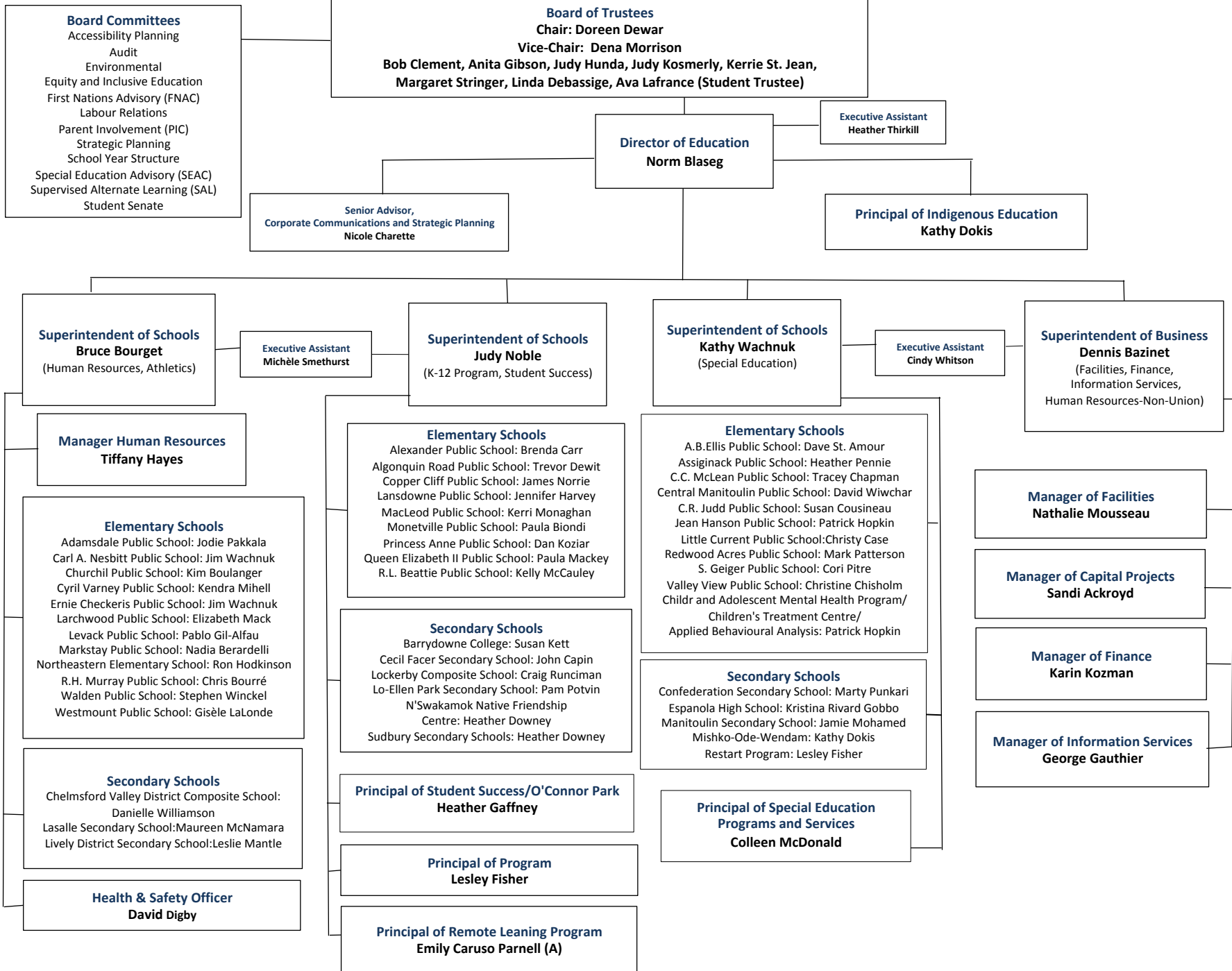


Rainbow District School Board



Board Committees

Accessibility Planning
Audit
Environmental
Equity and Inclusive Education
First Nations Advisory (FNAC)
Labour Relations
Parent Involvement (PIC)
Strategic Planning
School Year Structure
Special Education Advisory (SEAC)
Supervised Alternate Learning (SAL)
Student Senate

Board of Trustees

Chair: Doreen Dewar
Vice-Chair: Dena Morrison
Bob Clement, Anita Gibson, Judy Hunda, Judy Kosmerly, Kerrie St. Jean,
Margaret Stringer, Linda Debassige, Ava Lafrance (Student Trustee)

Director of Education
Norm Blaseg

Executive Assistant
Heather Thirkill

Senior Advisor,
Corporate Communications and Strategic Planning
Nicole Charette

Principal of Indigenous Education
Kathy Dokis

Superintendent of Schools
Bruce Bourget
(Human Resources, Athletics)

Executive Assistant
Michèle Smethurst

Superintendent of Schools
Judy Noble
(K-12 Program, Student Success)

Superintendent of Schools
Kathy Wachnuk
(Special Education)

Executive Assistant
Cindy Whitson

Superintendent of Business
Dennis Bazinet
(Facilities, Finance,
Information Services,
Human Resources-Non-Union)

Manager Human Resources
Tiffany Hayes

Elementary Schools

Adamsdale Public School: Jodie Pakkala
Carl A. Nesbitt Public School: Jim Wachnuk
Churchil Public School: Kim Boulanger
Cyril Varney Public School: Kendra Mihell
Ernie Checkeris Public School: Jim Wachnuk
Larchwood Public School: Elizabeth Mack
Levack Public School: Pablo Gil-Alfau
Markstay Public School: Nadia Berardelli
Northeastern Elementary School: Ron Hodgkinson
R.H. Murray Public School: Chris Bourré
Walden Public School: Stephen Winckel
Westmount Public School: Gisèle LaLonde

Secondary Schools

Chelmsford Valley District Composite School:
Danielle Williamson
Lasalle Secondary School:Maureen McNamara
Lively District Secondary School:Leslie Mantle

Health & Safety Officer
David Digby

Elementary Schools

Alexander Public School: Brenda Carr
Algonquin Road Public School: Trevor Dewit
Copper Cliff Public School: James Norrie
Lansdowne Public School: Jennifer Harvey
MacLeod Public School: Kerri Monaghan
Monetville Public School: Paula Biondi
Princess Anne Public School: Dan Koziar
Queen Elizabeth II Public School: Paula Mackey
R.L. Beattie Public School: Kelly McCauley

Secondary Schools

Barrydowne College: Susan Kett
Cecil Facer Secondary School: John Capin
Lockerby Composite School: Craig Runciman
Lo-Ellen Park Secondary School: Pam Potvin
N'Swakamok Native Friendship
Centre: Heather Downey
Sudbury Secondary Schools: Heather Downey

Principal of Student Success/O'Connor Park
Heather Gaffney

Principal of Program
Lesley Fisher

Principal of Remote Leaning Program
Emily Caruso Parnell (A)

Elementary Schools

A.B.Ellis Public School: Dave St. Amour
Assignack Public School: Heather Pennie
C.C. McLean Public School: Tracey Chapman
Central Manitoulin Public School: David Wiwchar
C.R. Judd Public School: Susan Cousineau
Jean Hanson Public School: Patrick Hopkin
Little Current Public School:Christy Case
Redwood Acres Public School: Mark Patterson
S. Geiger Public School: Cori Pitre
Valley View Public School: Christine Chisholm
Childr and Adolescent Mental Health Program/
Children's Treatment Centre/
Applied Behavioural Analysis: Patrick Hopkin

Secondary Schools

Confederation Secondary School: Marty Punkari
Espanola High School: Kristina Rivard Gobbo
Manitoulin Secondary School: Jamie Mohamed
Mishko-Ode-Wendam: Kathy Dokis
Restart Program: Lesley Fisher

Principal of Special Education
Programs and Services
Colleen McDonald

Manager of Facilities
Nathalie Mousseau

Manager of Capital Projects
Sandi Ackroyd

Manager of Finance
Karin Kozman

Manager of Information Services
George Gauthier