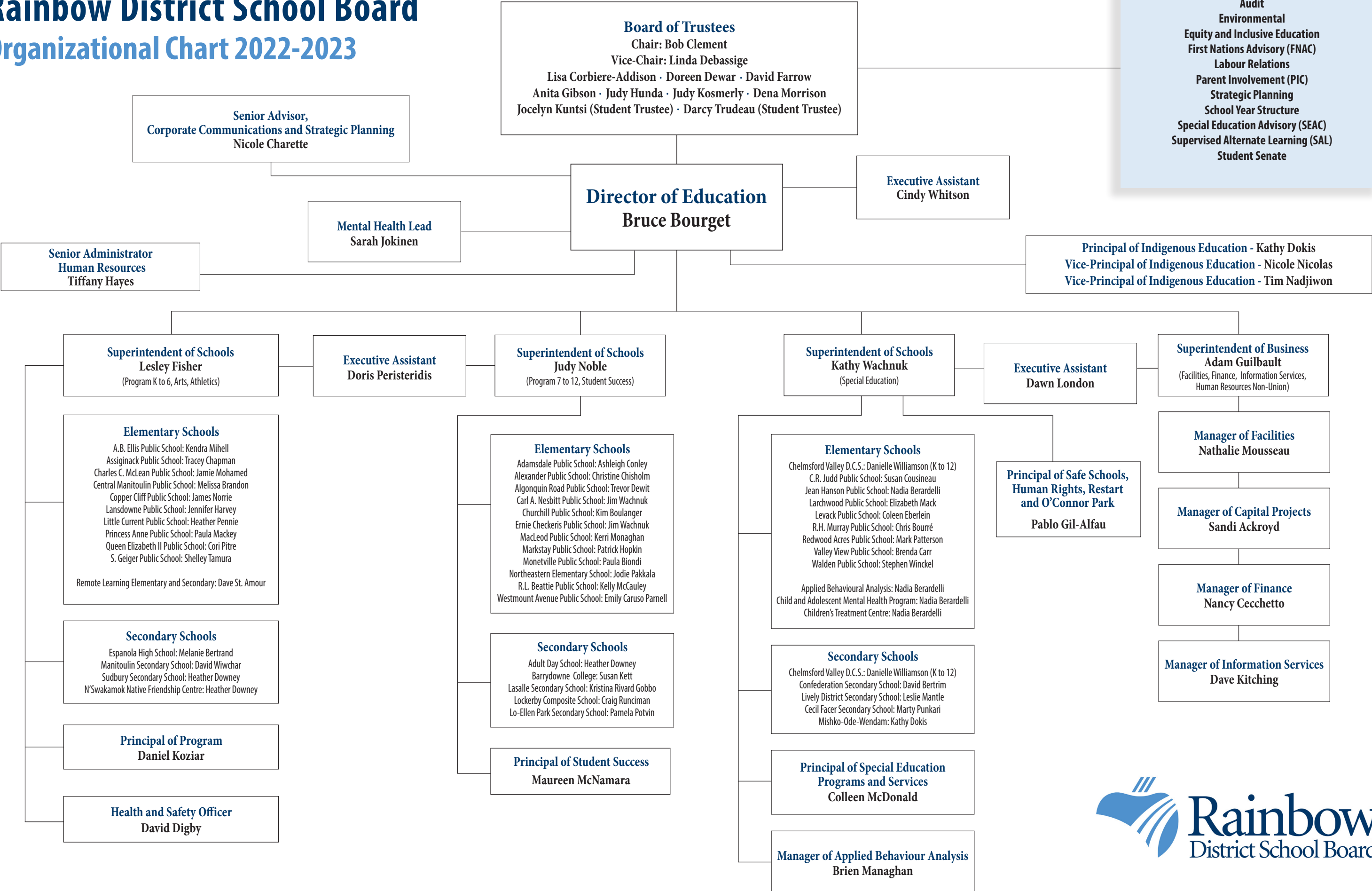


Rainbow District School Board Organizational Chart 2022-2023



- Board Committees**
- Accessibility Planning
 - Audit
 - Environmental
 - Equity and Inclusive Education
 - First Nations Advisory (FNAC)
 - Labour Relations
 - Parent Involvement (PIC)
 - Strategic Planning
 - School Year Structure
 - Special Education Advisory (SEAC)
 - Supervised Alternate Learning (SAL)
 - Student Senate

